



Compassionate Sheffield

Enabling communities and challenging the notion of 'hard to reach'

NE and Yorkshire SCN Palliative and End of Life Care
October 12th 2022

Nick Deayton





Compassionate Sheffield

Small things, **BIG DIFFERENCE**





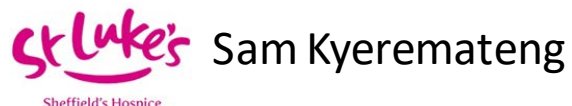
Ambition 9

Everyone lives the end of their life with dignity in the place of their choice.

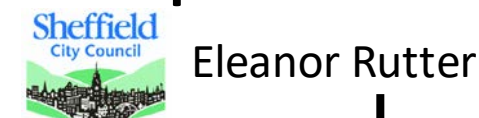
Clinical Pathways



Business Intelligence



Compassionate City



**Compassionate
Sheffield**

Programme Manager
Nick Deayton



Compassionate Sheffield

August 2021

Programme Manager
Nick Deayton

August 2022

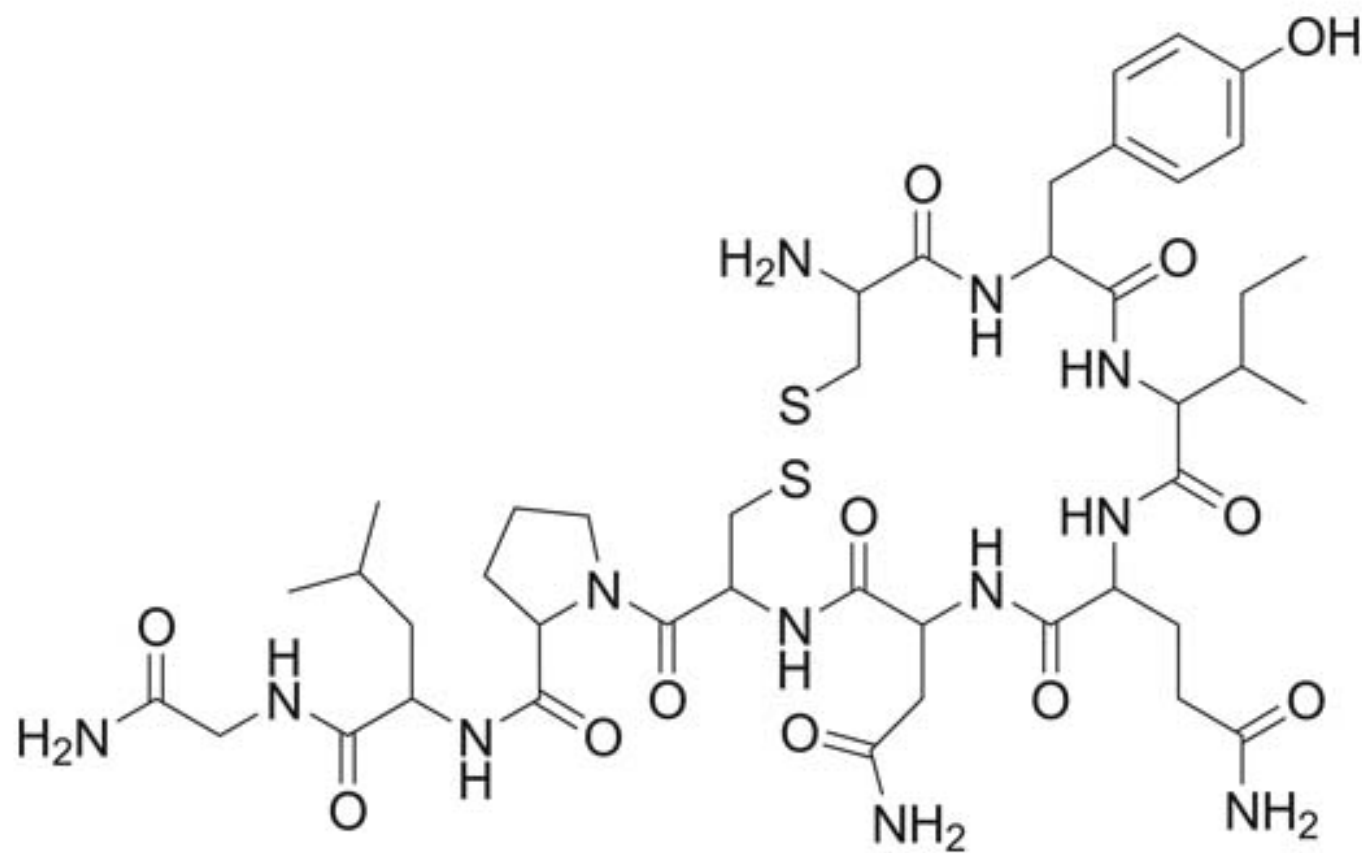
Community Development Worker
Mariana Garcia

August 2022

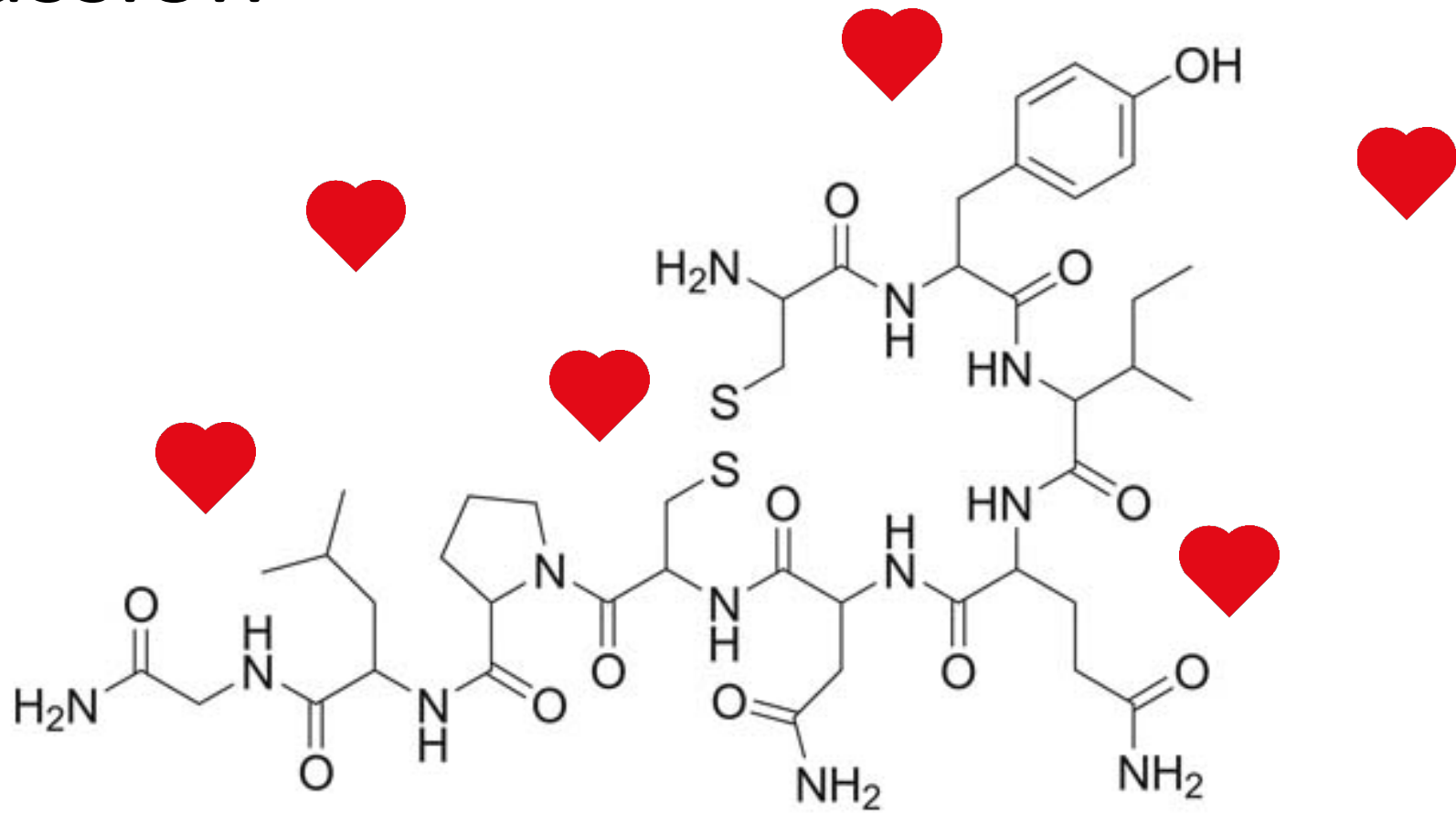
Community Development Worker
Ruth Nutter



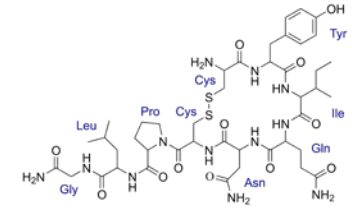
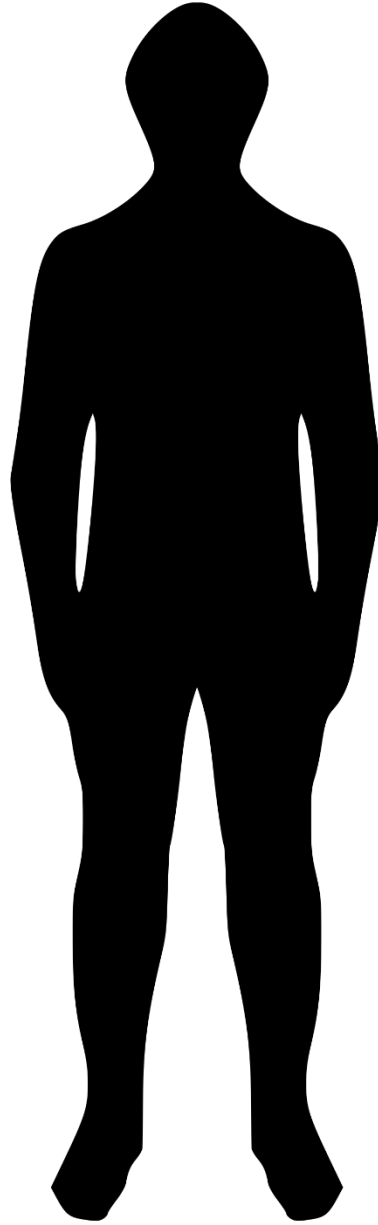
Oxytocin



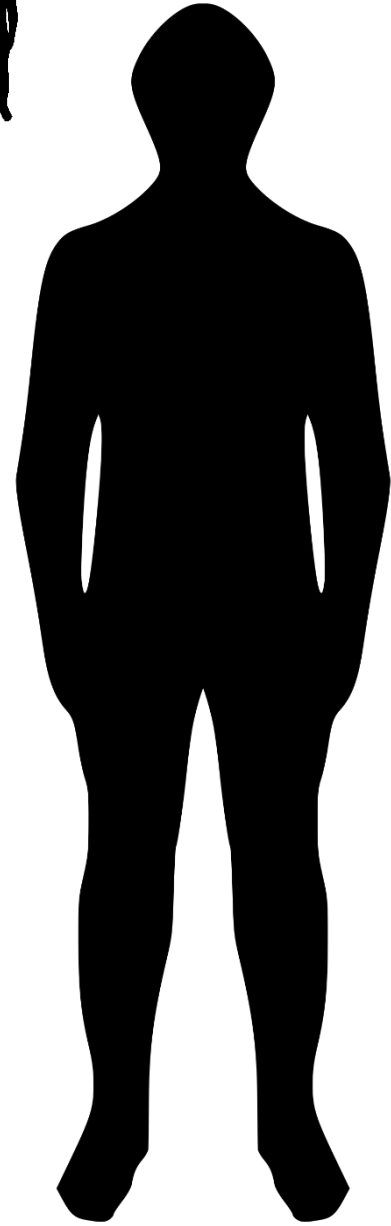
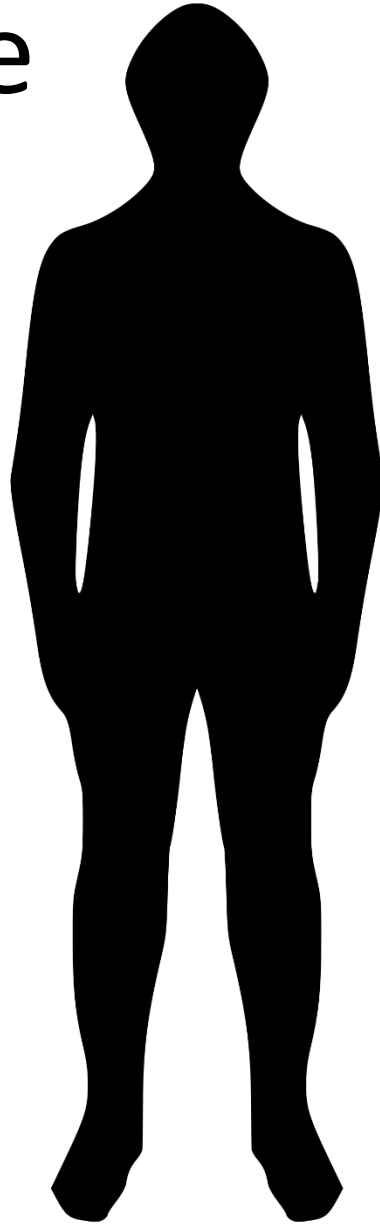
Compassion



Compassion



Compassionate interactions



**Compassionate
Sheffield**

Small things, **BIG DIFFERENCE**



Compassionate interactions in different contexts....

28% of people in the UK are obese



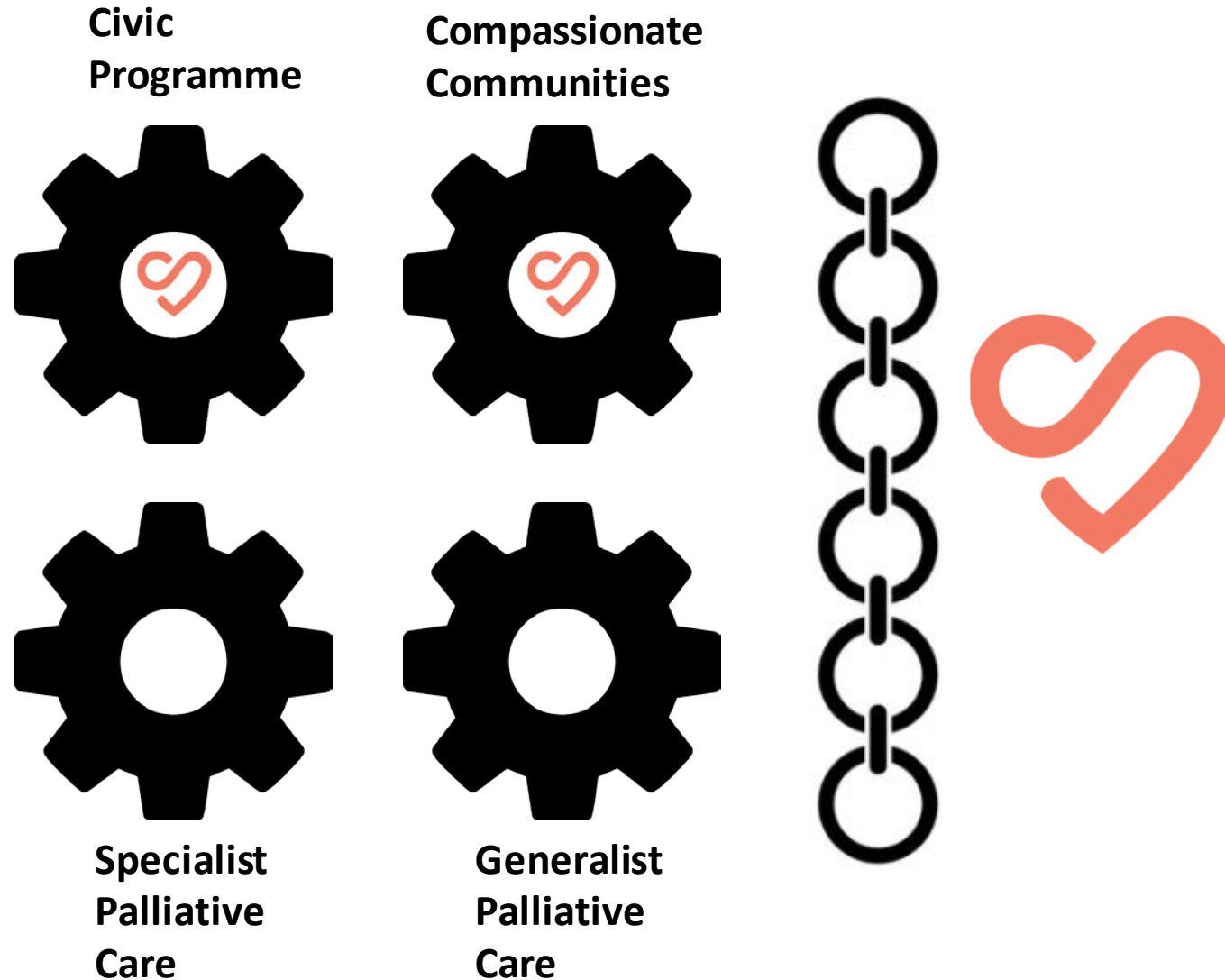
50% of people in the UK will be diagnosed with cancer



100% of people die



The new essentials for palliative care.....





**Compassionate
Sheffield**

**Enabling communities and challenging
the notion of 'hard to reach**





Project... Navigating the end of life

Local End of Life Doulas

3 day sessions – improving competency around death

Personal relationship
with death

Grief

ReSPECT

Palliative
Care

Family Dynamics

Funeral Planning

Person Centred Care

Advance Care Planning

Will / Power of Attorney

Local services

Staff

October 2022

Volunteers

January 2023

Forever

Anyone : Care staff, members of the public, religious leaders, hairdressers....





Michael West
TheKingsFund>

4 Steps to Compassion

1. Attending... being there
2. Understanding... listening
3. Relating... empathising
4. Taking action... helping

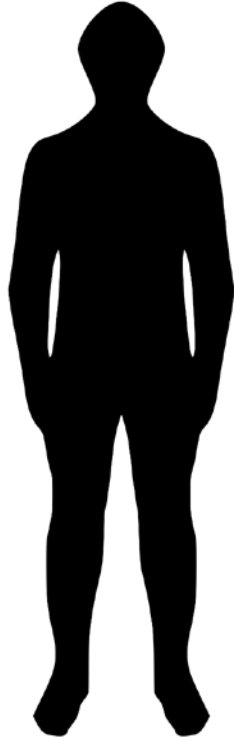
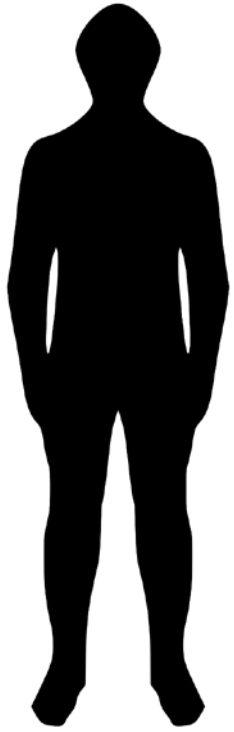




Compassion is a means of connecting with others – those we love, those to whom we are neutral or indifferent and those we find **difficult**, and establishing **trust** and warmth.

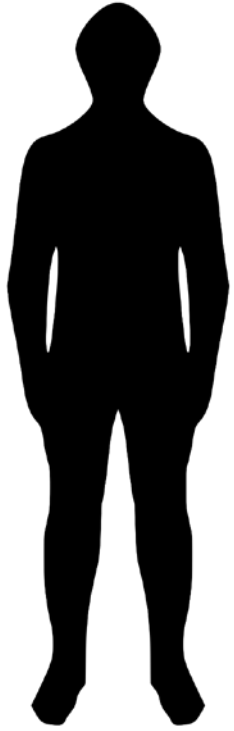
Michael A. West – Compassionate Leadership 2021

Care services

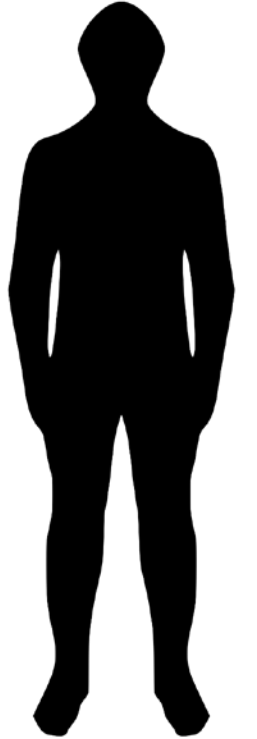


Access

Care services

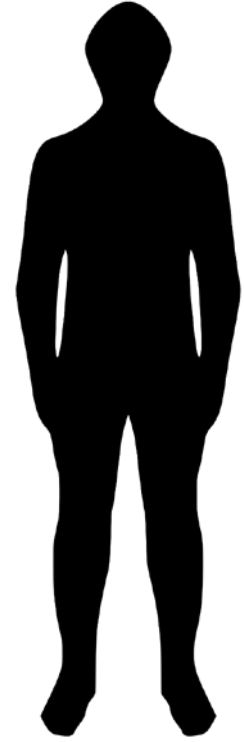
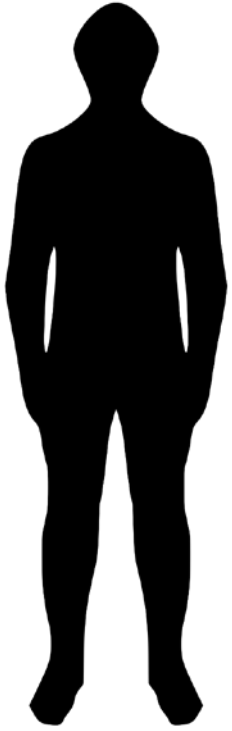


**Inequity of access to care services
is fuelling health inequalities**

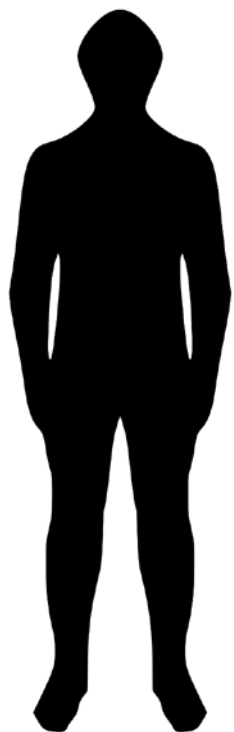


‘Difficult to reach’

Care services



‘Community engagement’



Community engagement

Being there

Listening

Empathising

Helping



Tackling health inequalities by
Improving equity of access



**Compassionate
Sheffield**

**Enabling communities and challenging
the notion of 'hard to reach'**





Project... Advance Care Planning

Foundry Primary Care Network

Low rates amongst 'non white British' communities

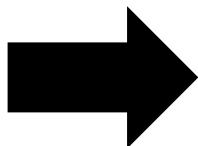
Roma

Pakistani

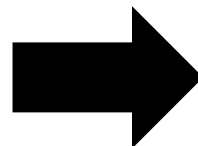
Yemini



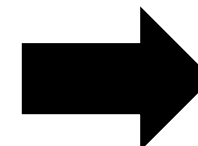
Preliminary
stakeholder
meetings



Focus Groups



Interviews



Video
Resources

Value is in the process





Compassionate Sheffield

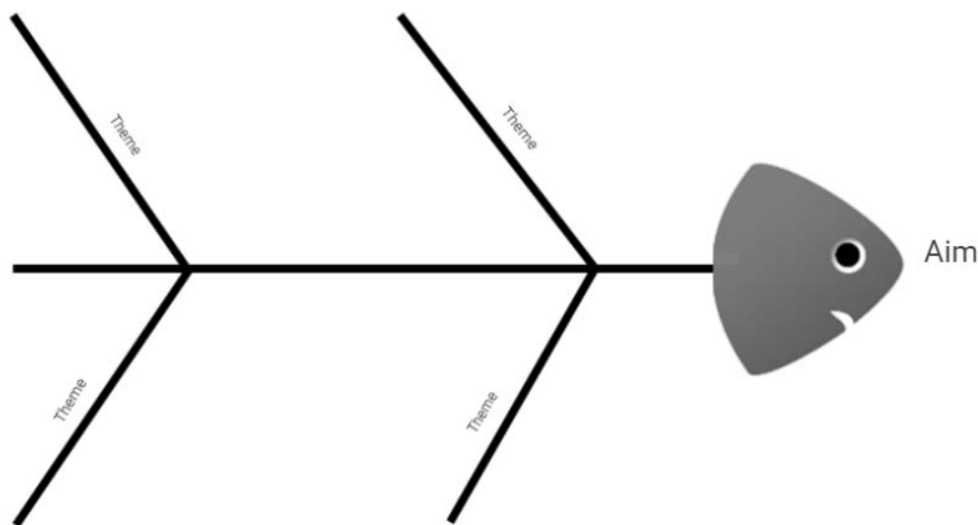


Questions / Comments / Ideas



Activity – Fishbone Diagram

- Get into groups
- Chose Ambition 2 or Ambition 6 as your aim
- Draw a blank fishbone
- Write on post its what the barriers are to achieving that aim
- Theme your post its around the bones
- Consider how you could lower / remove / investigate the barriers
- Identify someone to feedback



Ambitions for Palliative and End of Life Care:

A national framework for local action 2021-2026



02

Each person gets fair access to care

I live in a society where I get good end of life care regardless of who I am, where I live or the circumstances of my life.

06

Each community is prepared to help

I live in a community where everybody recognises that we all have a role to play in supporting each other in times of crisis and loss. People are ready, willing and confident to have conversations about living and dying well and to support each other in emotional and practical ways.



Compassionate Sheffield

Let's talk...

Contact - Nick Deayton

N.Deayton@hospicesheffield.co.uk

07851 240523



www.compassionate-sheffield.co.uk

Reflecting as you travel home

Reflecting on all the sessions you have heard today take a moment to consider.

- What have you learnt that you did not know before or what inspired you the most ?
- What will you take back to your workplace and consider implementing or improving in practice ?
- What from what you heard today might be key priorities for your organisation?
- What could be the challenges to meeting these priorities ?

Future Sessions – Lunch and Learn

- 19 October 2022

Sue Bottomley National Programme Director palliative and end of life care
Topic- ICB statutory guidance PEOl and commissioning and contracting

- 9 November 2022

HEE colleagues

Topic- Nurse apprenticeships and nursing associate opportunities

- E mail Stephanie Beal stephaniebeal@nhs.net for the link



Evaluation

Please help us by completing the evaluation for the conference by using the QR code attached. (Copies are also on the tables).

We welcome your feedback!



Staying up to date

NHS Futures National End of life Care Practitioners Network

E mail: Sherree.Fagge@nhs.net to join

To be added to the SCN distribution list for future webinars,

E mail: stephaniebeal@nhs.net

To suggest topics for future *Lunch and Learn* webinars,

E mail: marie.hancock2@nhs.net

Please use our website.

<https://www.yhscn.nhs.uk/palliative--end-of-life-care-clinical-network>