

Yorkshire and the Humber (Y&H) Strategic Clinical Network (SCN) STOCKTAKE OF DIALYSIS CAPACITY - OCTOBER 2015

The Dialysis Capacity survey was developed in partnership with the Clinical Affairs Board of the Renal Association. The survey has been disseminated by Y&H SCN to all Yorkshire and Humber renal units for completion.

The survey contained questions on:

- 1. Hospital / Centre Dialysis capacity and usage**
- 2. Satellite Dialysis capacity and usage**
- 3. Home Therapies**

The survey asked renal units to obtain the requested information using the census date of 31st October 2015.

This workbook contains a summary of the information collected and this is presented in both tables and graphs.

Data tables are represented in the workbook sheets where the tab is highlighted in green and graphs are represented in the workbook sheets where the tab is highlighted in blue.

The workbook represents data from the last 5 years showing 2011 to 2015.

The workbook also reflects any commentary provided by the Yorkshire and Humber renal units with regards to their returned data.

Should you have any queries with regards to the information contained within this workbook please do not hesitate to contact either:

Rebecca Campbell, Quality Improvement Manager, rebecca.campbell6@nhs.net / 0113 8253448

or

Sarah Boul, Quality Improvement Lead, sarah.boul@nhs.net / 0113 8253458

Commentary/Data Health Warnings
Provided by Yorkshire and the Humber Renal Units

Hull: The numbers of haemodialysis patients have not been formally reviewed by the ward manager and so may be subject to change.

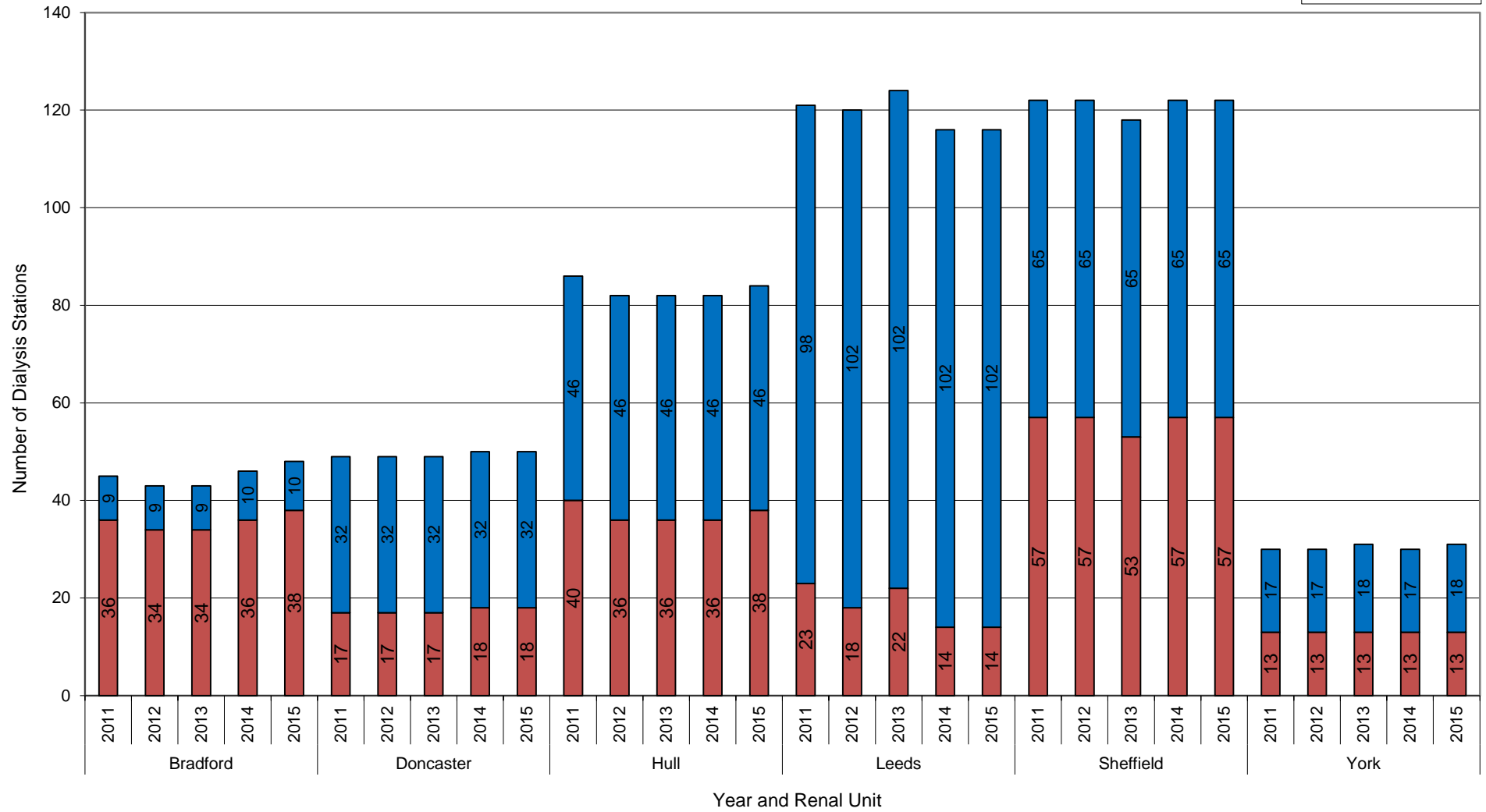
Yorkshire and the Humber Number of Dialysis Stations (chronic) reported per unit split by main and satellite per survey 2011 - 2015				
Renal Unit	Year	Main Unit	Satellite	Total
Bradford	2011	36	9	45
	2012	34	9	43
	2013	34	9	43
	2014	36	10	46
	2015	38	10	48
Doncaster	2011	17	32	49
	2012	17	32	49
	2013	17	32	49
	2014	18	32	50
	2015	18	32	50
Hull	2011	40	46	86
	2012	36	46	82
	2013	36	46	82
	2014	36	46	82
	2015	38	46	84
Leeds	2011	23	98	121
	2012	18	102	120
	2013	22	102	124
	2014	14	102	116
	2015	14	102	116
Sheffield	2011	57	65	122
	2012	57	65	122
	2013	53	65	118
	2014	57	65	122
	2015	57	65	122
York	2011	13	17	30
	2012	13	17	30
	2013	13	18	31
	2014	13	17	30
	2015	13	18	31
Yorkshire and the Humber	Year	Main Unit	Satellite	Total
	2011	186	267	453
	2012	175	271	446
	2013	175	272	447
	2014	174	272	446
	2015	178	273	451

Yorkshire and the Humber Percentage of Dialysis Stations (chronic) per unit split by main and satellite per survey 2011 - 2015				
Renal Unit	Year	Main Unit	Satellite	Total
Bradford	2011	80%	20%	100%
	2012	79%	21%	100%
	2013	79%	21%	100%
	2014	78%	22%	100%
	2015	79%	21%	100%
Doncaster	2011	35%	65%	100%
	2012	35%	65%	100%
	2013	35%	65%	100%
	2014	36%	64%	100%
	2015	36%	64%	100%
Hull	2011	47%	53%	100%
	2012	44%	56%	100%
	2013	44%	56%	100%
	2014	44%	56%	100%
	2015	45%	55%	100%
Leeds	2011	19%	81%	100%
	2012	15%	85%	100%
	2013	18%	82%	100%
	2014	12%	88%	100%
	2015	12%	88%	100%
Sheffield	2011	47%	53%	100%
	2012	47%	53%	100%
	2013	45%	55%	100%
	2014	47%	53%	100%
	2015	47%	53%	100%
York	2011	43%	57%	100%
	2012	43%	57%	100%
	2013	42%	58%	100%
	2014	43%	57%	100%
	2015	42%	58%	100%
Yorkshire and the Humber	Year	Main Unit	Satellite	Total
	2011	41%	59%	100%
	2012	39%	61%	100%
	2013	39%	61%	100%
	2014	39%	61%	100%
	2015	39%	61%	100%

Yorkshire and the Humber
Number of Dialysis Stations in Yorkshire and the Humber Split by Main Unit and Satellite Unit
2011-2015

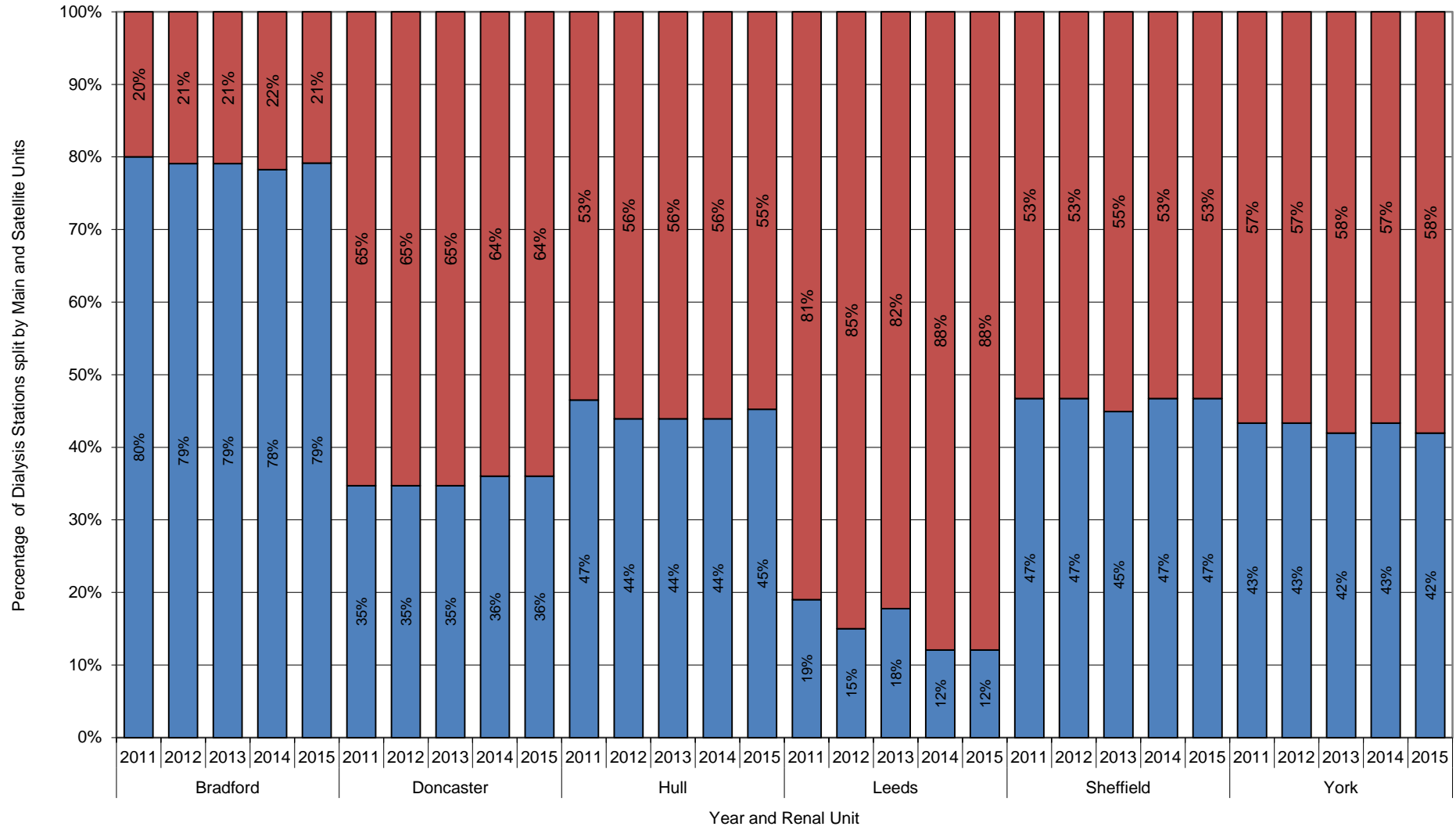


Yorkshire and the Humber
Number of Dialysis Stations (chronic) reported per unit split by main and satellite per survey
2011 - 2015



**Yorkshire and the Humber
Percentage of Dialysis Stations (chronic) per unit split by main and satellite per survey
2011 - 2015**

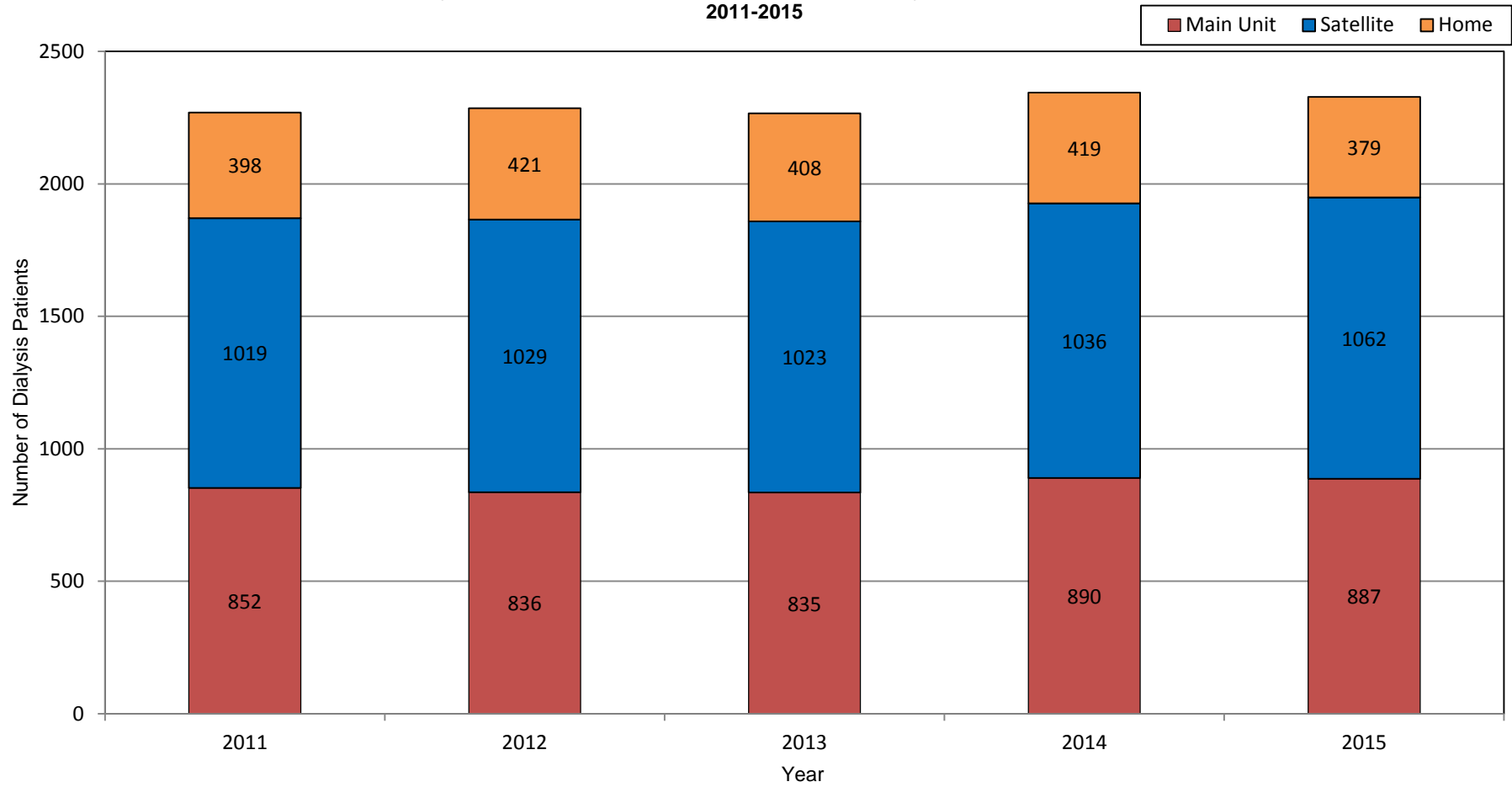
■ Main Unit ■ Satellite



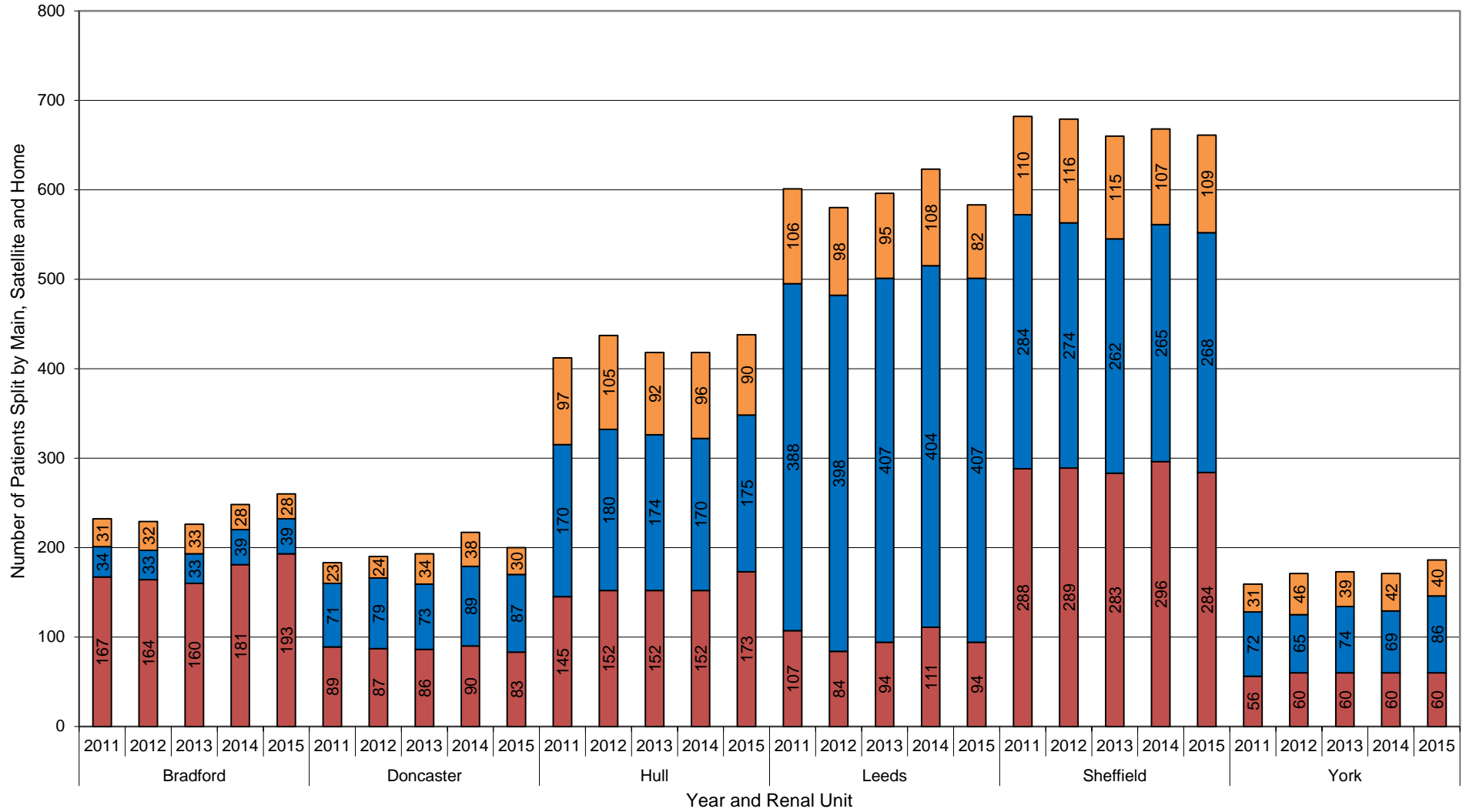
Yorkshire and the Humber Number of Dialysis Patients split by main unit, satellite and home per survey 2011-2015					
Renal Unit	Year	Main Unit	Satellite	Home	Total
Bradford	2011	167	34	31	232
	2012	164	33	32	229
	2013	160	33	33	226
	2014	181	39	28	248
	2015	193	39	28	260
Doncaster	2011	89	71	23	183
	2012	87	79	24	190
	2013	86	73	34	193
	2014	90	89	38	217
	2015	83	87	30	200
Hull	2011	145	170	97	412
	2012	152	180	105	437
	2013	152	174	92	418
	2014	152	170	96	418
	2015	173	175	90	438
Leeds	2011	107	388	106	601
	2012	84	398	98	580
	2013	94	407	95	596
	2014	111	404	108	623
	2015	94	407	82	583
Sheffield	2011	288	284	110	682
	2012	289	274	116	679
	2013	283	262	115	660
	2014	296	265	107	668
	2015	284	268	109	661
York	2011	56	72	31	159
	2012	60	65	46	171
	2013	60	74	39	173
	2014	60	69	42	171
	2015	60	86	40	186
Yorkshire and the Humber	Year	Main Unit	Satellite	Home	Total
	2011	852	1019	398	2269
	2012	836	1029	421	2286
	2013	835	1023	408	2266
	2014	890	1036	419	2345
2015	887	1062	379	2328	

Yorkshire and the Humber Percentage of Dialysis Patients per unit split by main unit, satellite and home per survey 2011 - 2015					
Renal Unit	Year	Main Unit	Satellite	Home	Total
Bradford	2011	72%	15%	13%	100%
	2012	72%	14%	14%	100%
	2013	71%	15%	15%	100%
	2014	73%	16%	11%	100%
	2015	74%	15%	11%	100%
Doncaster	2011	49%	39%	13%	100%
	2012	46%	42%	13%	100%
	2013	45%	38%	18%	100%
	2014	41%	41%	18%	100%
	2015	42%	44%	15%	100%
Hull	2011	35%	41%	24%	100%
	2012	35%	41%	24%	100%
	2013	36%	42%	22%	100%
	2014	36%	41%	23%	100%
	2015	39%	40%	21%	100%
Leeds	2011	18%	65%	18%	100%
	2012	14%	69%	17%	100%
	2013	16%	68%	16%	100%
	2014	18%	65%	17%	100%
	2015	16%	70%	14%	100%
Sheffield	2011	42%	42%	16%	100%
	2012	43%	40%	17%	100%
	2013	43%	40%	17%	100%
	2014	44%	40%	16%	100%
	2015	43%	41%	16%	100%
York	2011	35%	45%	19%	100%
	2012	35%	38%	27%	100%
	2013	35%	43%	23%	100%
	2014	35%	40%	25%	100%
	2015	32%	46%	22%	100%
Yorkshire and the Humber	Year	Main Unit	Satellite	Home	Total
	2011	38%	45%	18%	100%
	2012	37%	45%	18%	100%
	2013	37%	45%	18%	100%
	2014	38%	44%	18%	100%
2015	38%	46%	16%	100%	

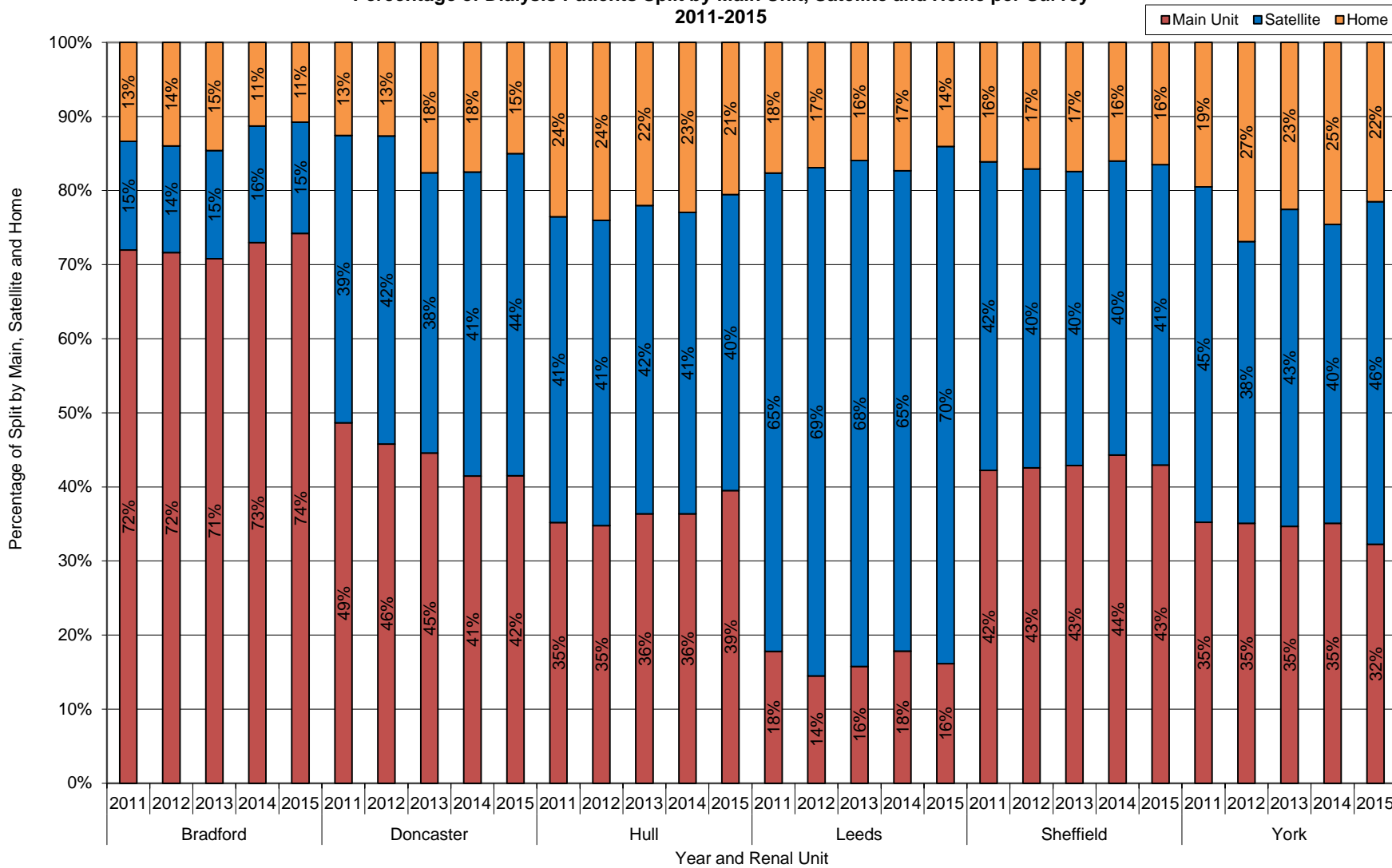
Yorkshire and the Humber
Number of Dialysis Patients in Yorkshire and the Humber Split by Main Unit, Satellite and Home
2011-2015



Yorkshire and the Humber
 Number of Dialysis Patients Split by Main Unit, Satellite and Home per Survey
 2011-2015



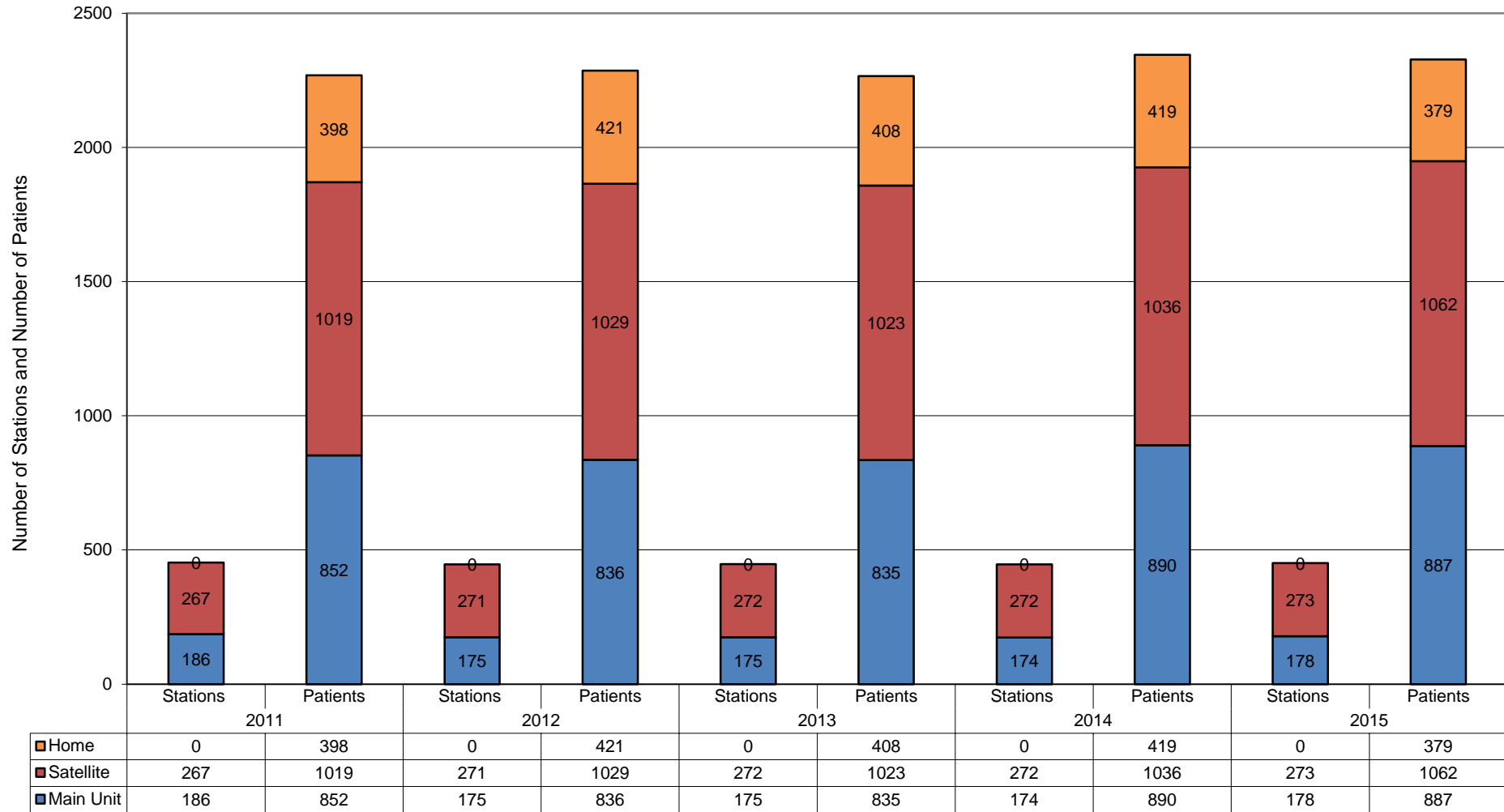
**Yorkshire and the Humber
Percentage of Dialysis Patients Split by Main Unit, Satellite and Home per Survey
2011-2015**



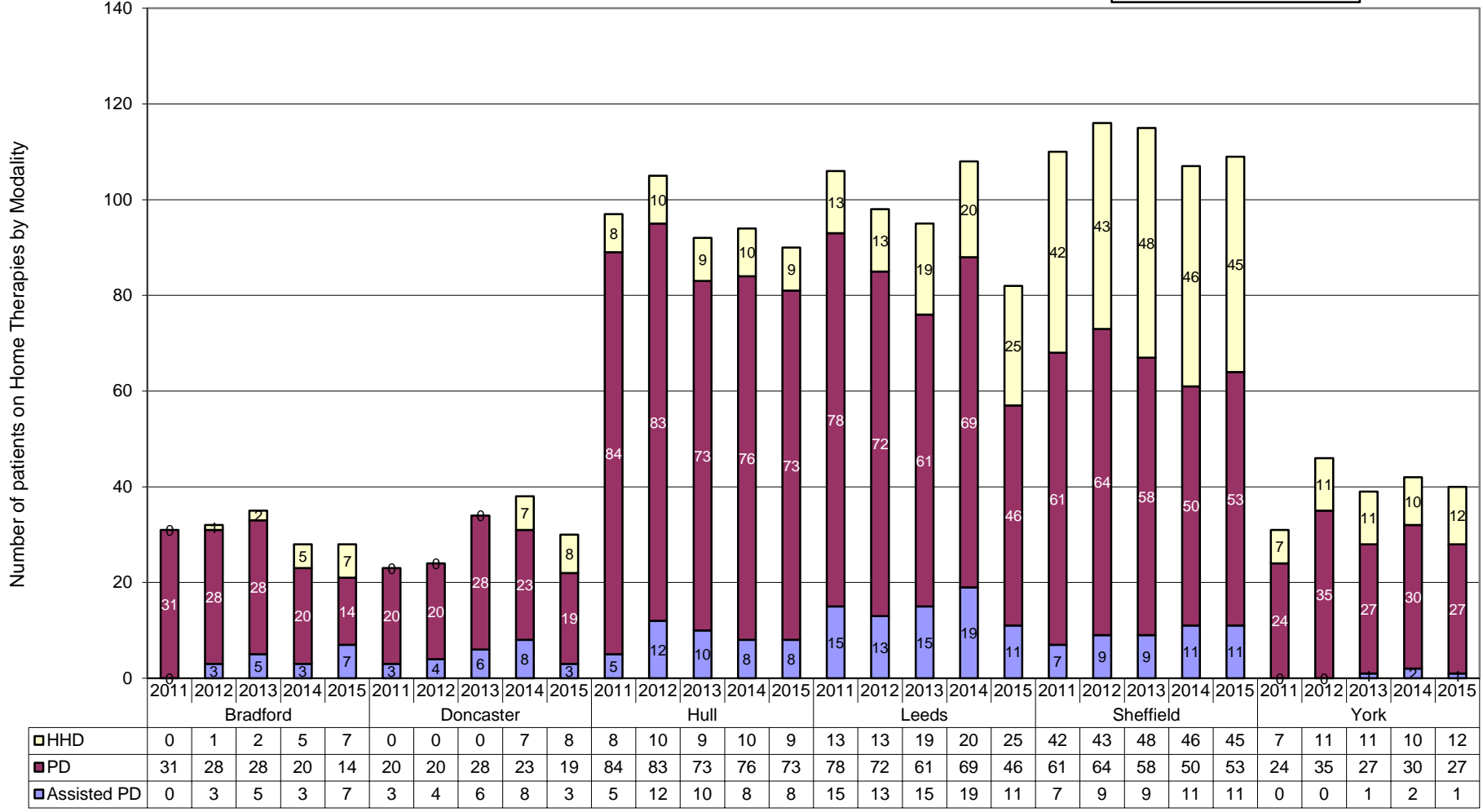
**Yorkshire and the Humber
Number of Dialysis Stations and Patients in Main Units, Satellite Units and Home
2011-2015**

	2011		2012		2013		2014		2015	
	Stations	Patients	Stations	Patients	Stations	Patients	Stations	Patients	Stations	Patients
Main Unit	186	852	175	836	175	835	174	890	178	887
Satellite	267	1019	271	1029	272	1023	272	1036	273	1062
Home	N/A	398	N/A	421	N/A	408	N/A	419	N/A	379
Total	453	2269	446	2286	447	2266	446	2345	451	2328

**Yorkshire and the Humber
Number of Dialysis Stations and Patients in Main Units, Satellite Units and Home
2011 - 2015**

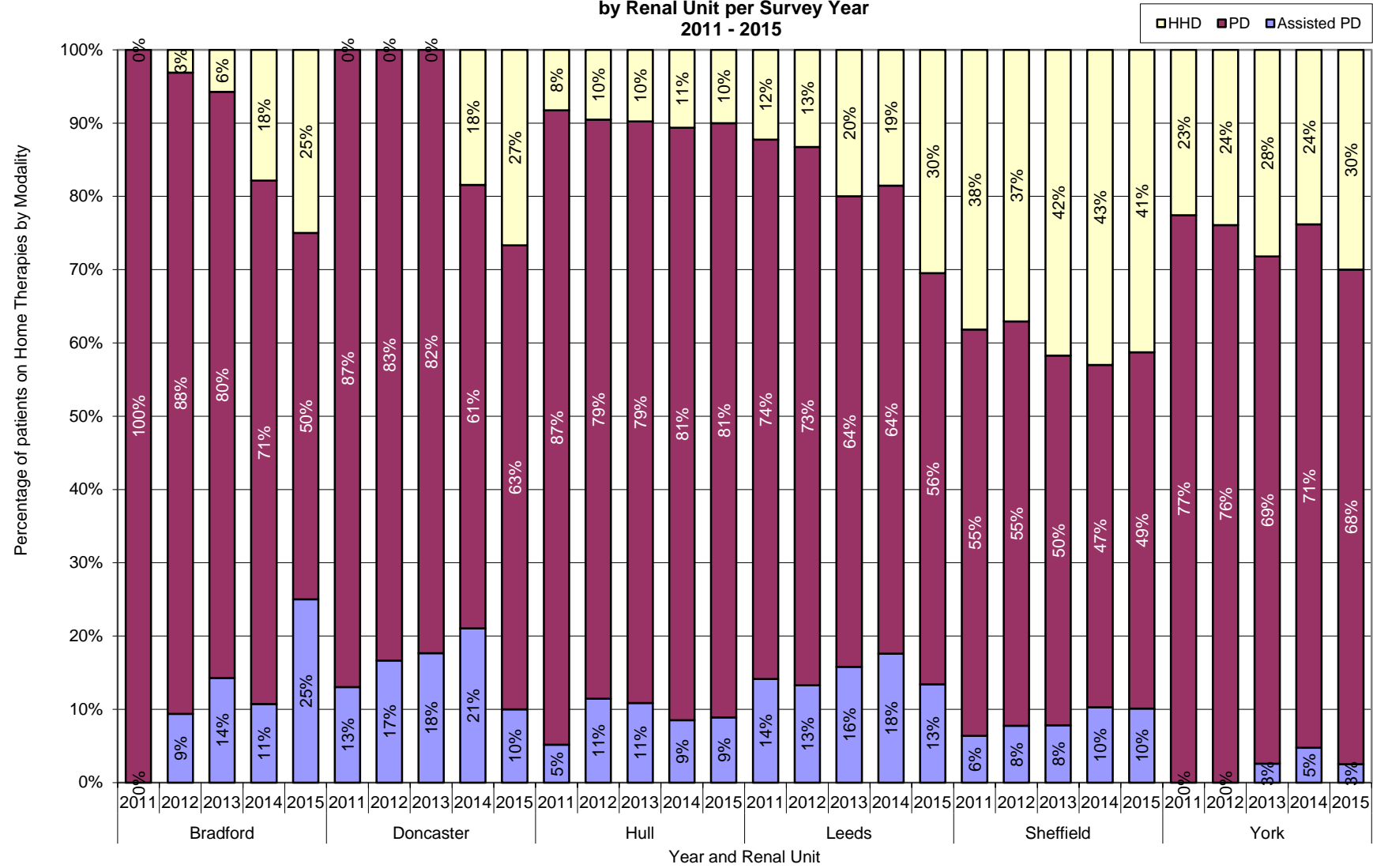


**Yorkshire and the Humber
Number of Home Therapies by Modality (Home Haemodialysis (HDD), Peritoneal Dialysis (PD) and Assisted PD)
by Renal Unit per Survey Year
2011 - 2015**



Year and Renal Unit

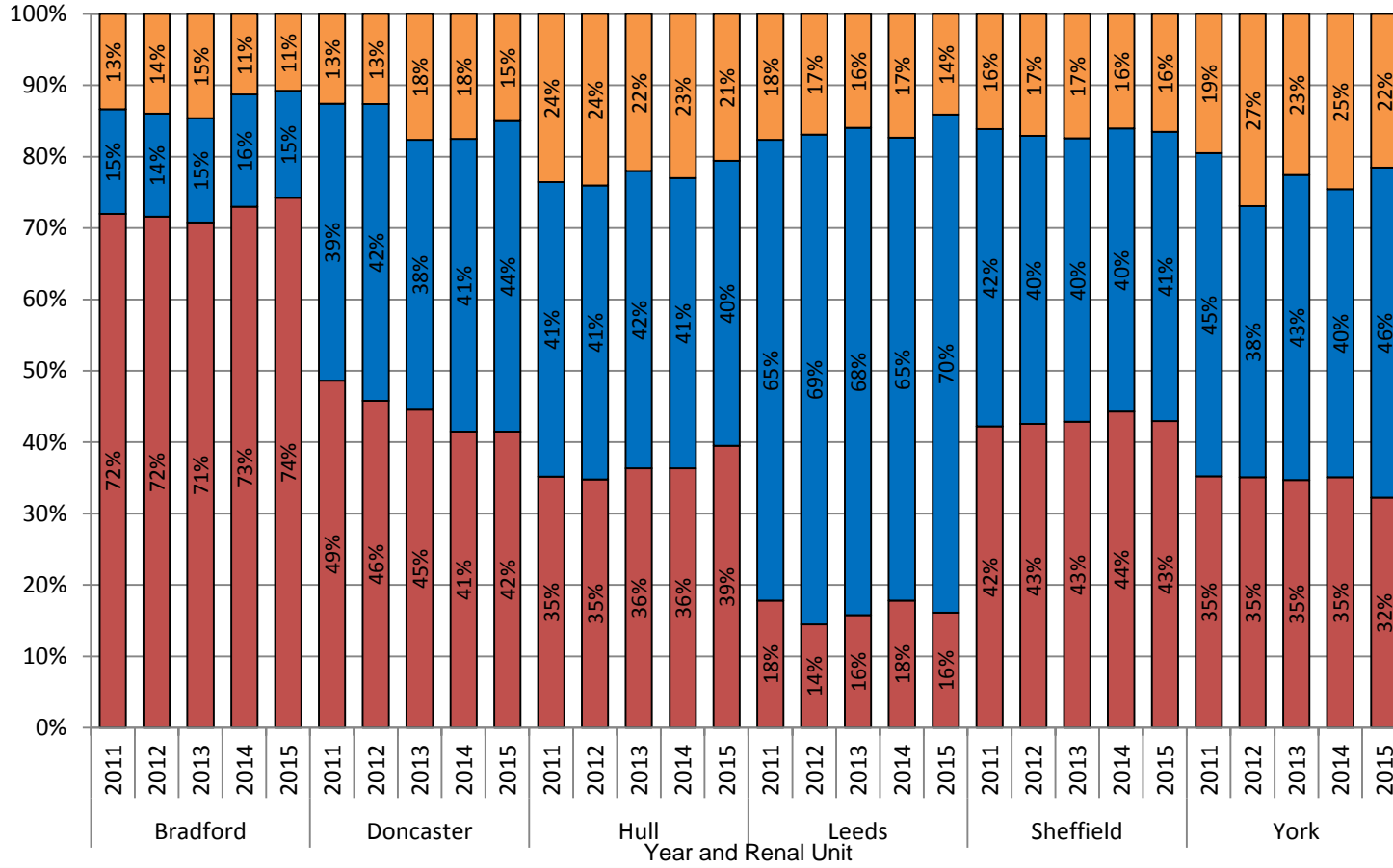
**Yorkshire and the Humber
Percentage of Home Therapies by Modality (Home Haemodialysis (HDD), Peritoneal Dialysis (PD) and Assisted PD)
by Renal Unit per Survey Year
2011 - 2015**



**Yorkshire and the Humber
Percentage of Dialysis Patients per unit Split by Main Unit, Satellite and Home per Survey
2011 - 2015**

■ Home
 ■ Satellite
 ■ Main Unit

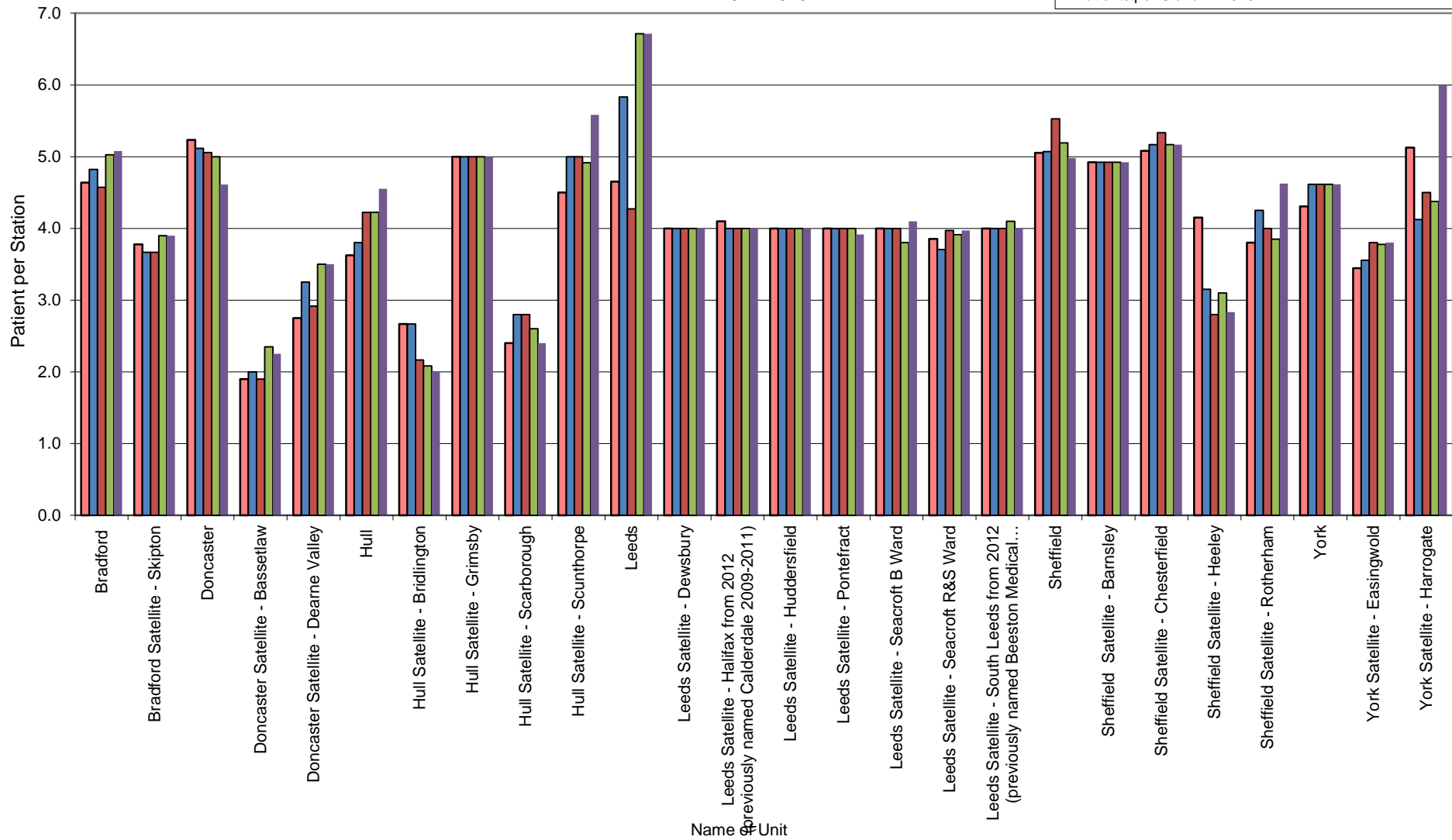
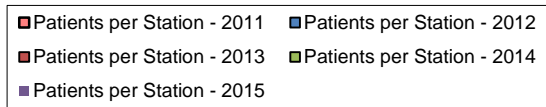
Percentage of Dialysis Patients Split by Main, Satellite and Home



Yorkshire and the Humber
Number of Dialysis Stations and Patients in Main Units and Satellite Units and Number of Patients per Station
2011-2015

Unit	2011			2012			2013			2014			2015		
	Number of patients	Number of stations	Patients per Station - 2011	Number of patients	Number of stations	Patients per Station - 2012	Number of patients	Number of stations	Patients per Station - 2013	Number of patients	Number of stations	Patients per Station - 2014	Number of patients	Number of stations	Patients per Station - 2015
Bradford	167	36	4.6	164	34	4.8	160	35	4.6	181	36	5.0	193	38	5.1
Bradford Satellite - Skipton	34	9	3.8	33	9	3.7	33	9	3.7	39	10	3.9	39	10	3.9
Doncaster	89	17	5.2	87	17	5.1	86	17	5.1	90	18	5.0	83	18	4.6
Doncaster Satellite - Bassetlaw	38	20	1.9	40	20	2.0	38	20	1.9	47	20	2.4	45	20	2.3
Doncaster Satellite - Dearne Valley	33	12	2.8	39	12	3.3	35	12	2.9	42	12	3.5	42	12	3.5
Hull	145	40	3.6	152	40	3.8	152	36	4.2	152	36	4.2	173	38	4.6
Hull Satellite - Bridlington	32	12	2.7	32	12	2.7	26	12	2.2	25	12	2.1	24	12	2.0
Hull Satellite - Grimsby	60	12	5.0	60	12	5.0	60	12	5.0	60	12	5.0	60	12	5.0
Hull Satellite - Scarborough	24	10	2.4	28	10	2.8	28	10	2.8	26	10	2.6	24	10	2.4
Hull Satellite - Scunthorpe	54	12	4.5	60	12	5.0	60	12	5.0	59	12	4.9	67	12	5.6
Leeds	107	23	4.7	105	18	5.8	94	22	4.3	94	14	6.7	94	14	6.7
Leeds Satellite - Dewsbury	48	12	4.0	48	12	4.0	48	12	4.0	48	12	4.0	48	12	4.0
Leeds Satellite - Halifax from 2012 (previously named Calderdale 2009-2011)	41	10	4.1	40	10	4.0	40	10	4.0	40	10	4.0	40	10	4.0
Leeds Satellite - Huddersfield	40	10	4.0	56	14	4.0	56	14	4.0	56	14	4.0	56	14	4.0
Leeds Satellite - Pontefract	48	12	4.0	48	12	4.0	48	12	4.0	48	12	4.0	47	12	3.9
Leeds Satellite - Seacroft B Ward	40	10	4.0	40	10	4.0	40	10	4.0	38	10	3.8	41	10	4.1
Leeds Satellite - Seacroft R&S Ward	131	34	3.9	126	34	3.7	135	34	4.0	133	34	3.9	135	34	4.0
Leeds Satellite - South Leeds from 2012 (previously named Beeston Medical Centre 2009-2011)	40	10	4.0	40	10	4.0	40	10	4.0	41	10	4.1	40	10	4.0
Sheffield	288	57	5.1	289	57	5.1	282	51	5.5	296	57	5.2	284	57	5.0
Sheffield Satellite - Barnsley	64	13	4.9	64	13	4.9	64	13	4.9	64	13	4.9	64	13	4.9
Sheffield Satellite - Chesterfield	61	12	5.1	62	12	5.2	64	12	5.3	62	12	5.2	62	12	5.2
Sheffield Satellite - Heeley	83	20	4.2	63	20	3.2	56	20	2.8	62	20	3.1	68	24	2.8
Sheffield Satellite - Rotherham	76	20	3.8	85	20	4.3	80	20	4.0	77	20	3.9	74	16	4.6
York	56	13	4.3	60	13	4.6	60	13	4.6	60	13	4.6	60	13	4.6
York Satellite - Easingwold	31	9	3.4	32	9	3.6	38	10	3.8	34	9	3.8	38	10	3.8
York Satellite - Harrogate	41	8	5.1	33	8	4.1	36	8	4.5	35	8	4.4	48	8	6.0

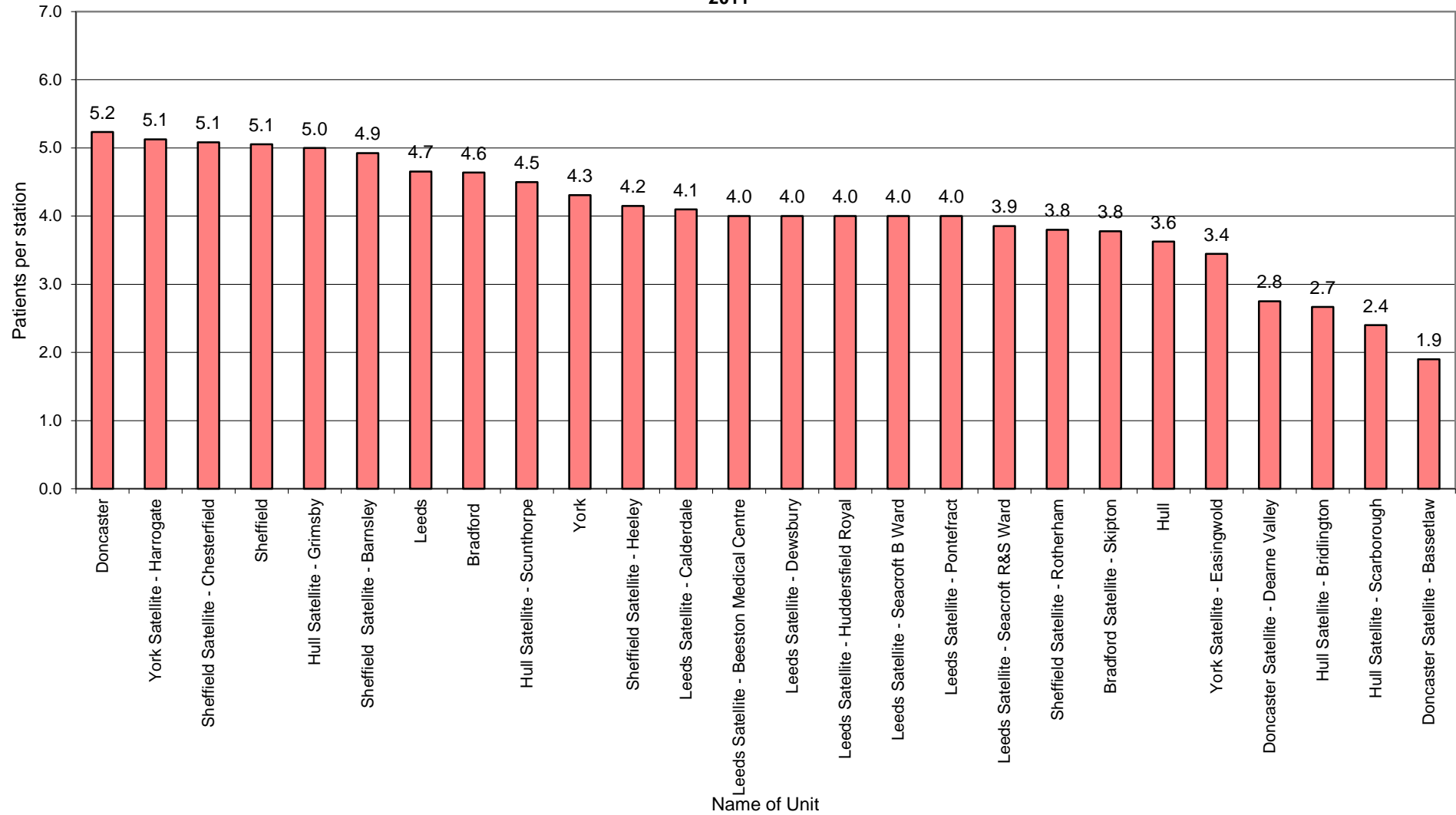
**Yorkshire and the Humber
Number of Patients per Station in Main Units and Satellite Units
2011-2015**



**Yorkshire and the Humber
Number of Dialysis Stations and Patients in Main Units and Satellite Units and
Number of Patients per Station Ratio Highest to Lowest
2011**

Unit	Number of patients	Number of stations	Patients per Station 2011
Doncaster	89	17	5.2
York Satellite - Harrogate	41	8	5.1
Sheffield Satellite - Chesterfield	61	12	5.1
Sheffield	288	57	5.1
Hull Satellite - Grimsby	60	12	5.0
Sheffield Satellite - Barnsley	64	13	4.9
Leeds	107	23	4.7
Bradford	167	36	4.6
Hull Satellite - Scunthorpe	54	12	4.5
York	56	13	4.3
Sheffield Satellite - Heeley	83	20	4.2
Leeds Satellite - Calderdale	41	10	4.1
Leeds Satellite - Beeston Medical Centre	40	10	4.0
Leeds Satellite - Dewsbury	48	12	4.0
Leeds Satellite - Huddersfield Royal	40	10	4.0
Leeds Satellite - Seacroft B Ward	40	10	4.0
Leeds Satellite - Pontefract	48	12	4.0
Leeds Satellite - Seacroft R&S Ward	131	34	3.9
Sheffield Satellite - Rotherham	76	20	3.8
Bradford Satellite - Skipton	34	9	3.8
Hull	145	40	3.6
York Satellite - Easingwold	31	9	3.4
Doncaster Satellite - Dearne Valley	33	12	2.8
Hull Satellite - Bridlington	32	12	2.7
Hull Satellite - Scarborough	24	10	2.4
Doncaster Satellite - Bassetlaw	38	20	1.9

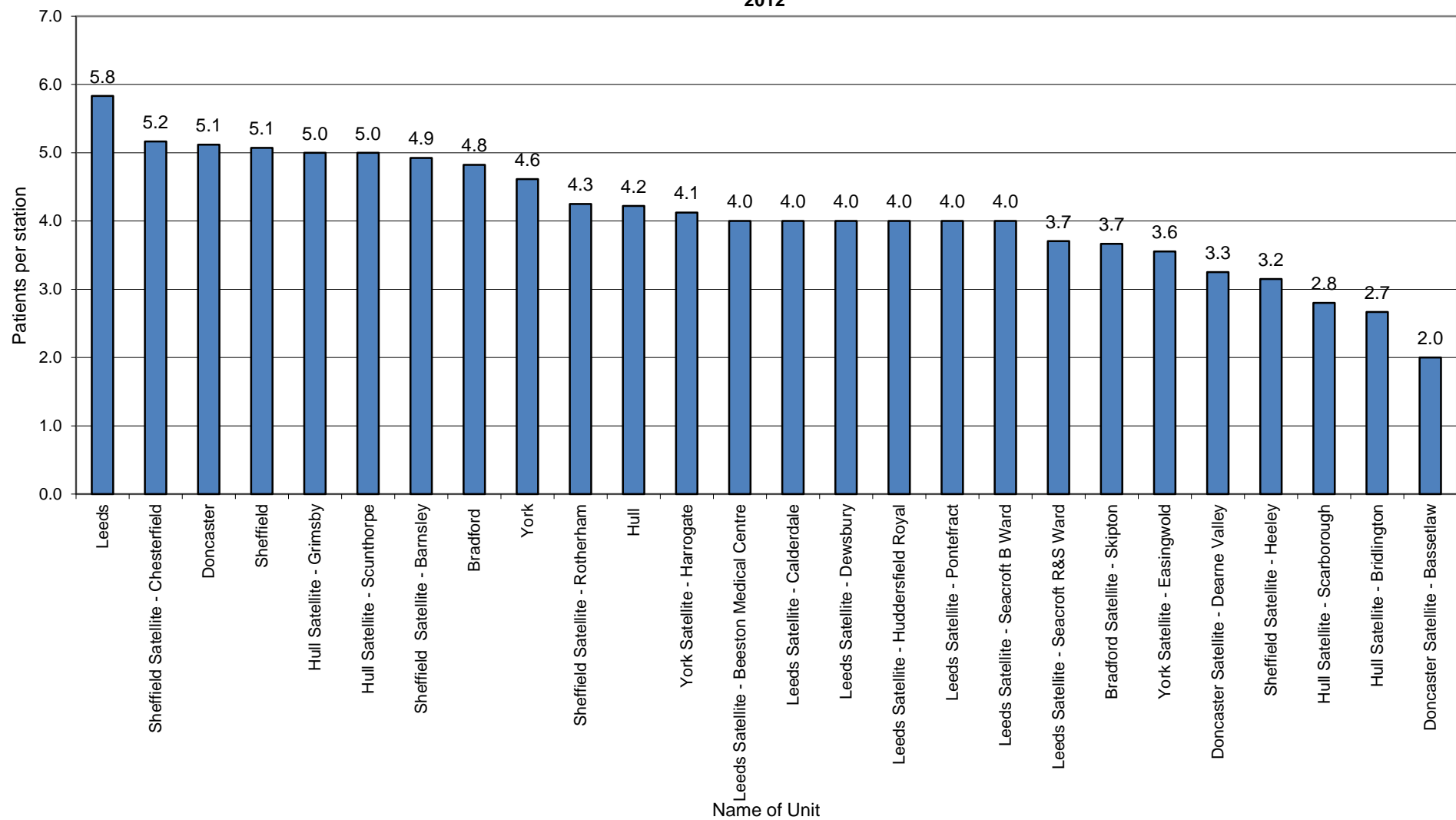
Yorkshire and the Humber
Number of Dialysis Stations and Patients in Main Units and Satellite Units and
Number of Patients per Station Ratio Highest to Lowest
2011



**Yorkshire and the Humber
Number of Dialysis Stations and Patients in Main Units and Satellite Units and
Number of Patients per Station Ratio Highest to Lowest
2012**

Unit	Number of patients	Number of stations	Patients per Station - 2012
Leeds	105	18	5.8
Sheffield Satellite - Chesterfield	62	12	5.2
Doncaster	87	17	5.1
Sheffield	289	57	5.1
Hull Satellite - Grimsby	60	12	5.0
Hull Satellite - Scunthorpe	60	12	5.0
Sheffield Satellite - Barnsley	64	13	4.9
Bradford	164	34	4.8
York	60	13	4.6
Sheffield Satellite - Rotherham	85	20	4.3
Hull	152	36	4.2
York Satellite - Harrogate	33	8	4.1
Leeds Satellite - Beeston Medical Centre	40	10	4.0
Leeds Satellite - Calderdale	40	10	4.0
Leeds Satellite - Dewsbury	48	12	4.0
Leeds Satellite - Huddersfield Royal	56	14	4.0
Leeds Satellite - Pontefract	48	12	4.0
Leeds Satellite - Seacroft B Ward	40	10	4.0
Leeds Satellite - Seacroft R&S Ward	126	34	3.7
Bradford Satellite - Skipton	33	9	3.7
York Satellite - Easingwold	32	9	3.6
Doncaster Satellite - Dearne Valley	39	12	3.3
Sheffield Satellite - Heeley	63	20	3.2
Hull Satellite - Scarborough	28	10	2.8
Hull Satellite - Bridlington	32	12	2.7
Doncaster Satellite - Bassetlaw	40	20	2.0

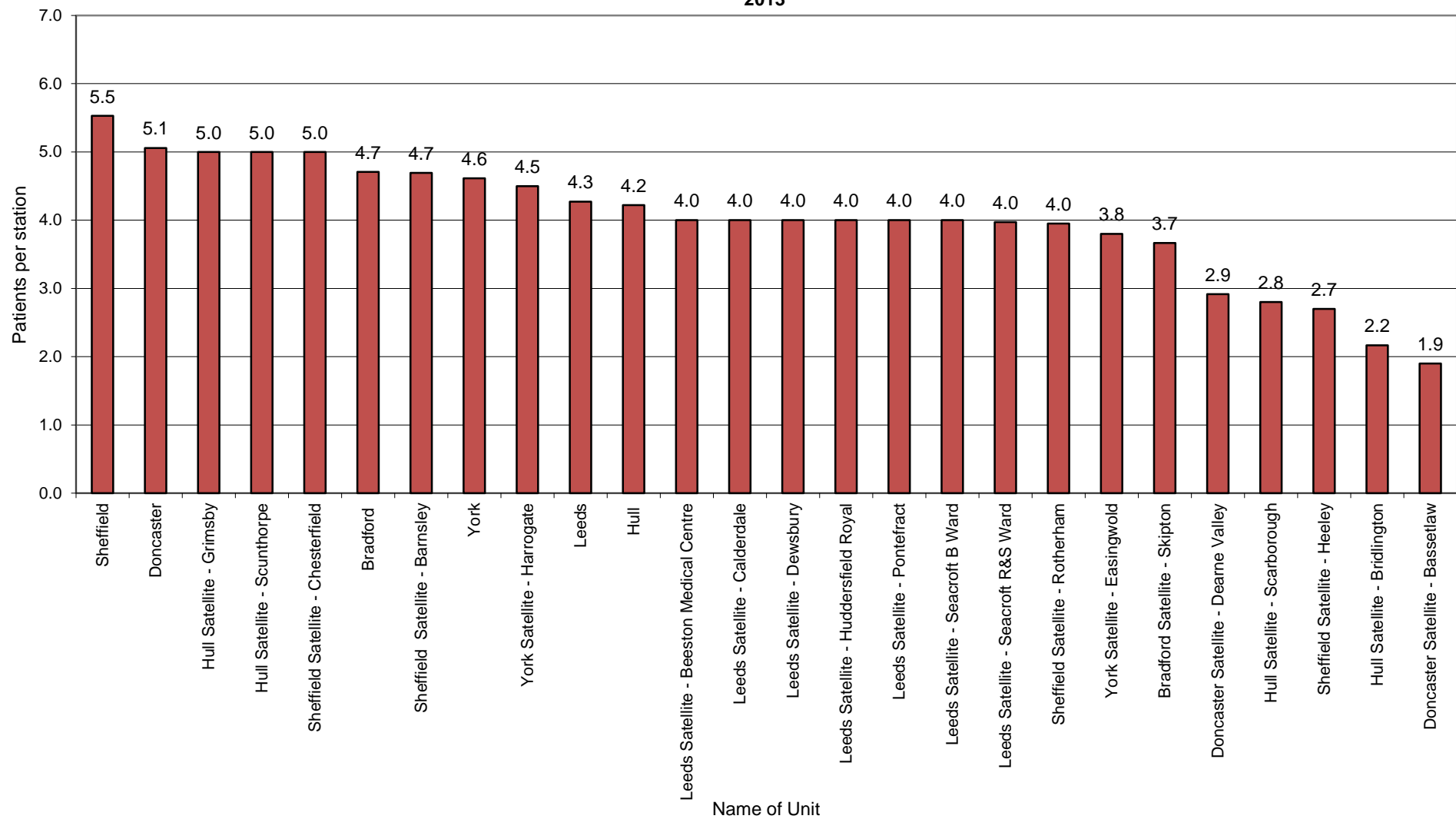
**Yorkshire and the Humber
Number of Dialysis Stations and Patients in Main Units and Satellite Units and
Number of Patients per Station Ratio Highest to Lowest
2012**



**Yorkshire and the Humber
Number of Dialysis Stations and Patients in Main Units and Satellite Units and
Number of Patients per Station Ratio Highest to Lowest
2013**

Unit	Number of patients	Number of stations	Patients per Station - 2013
Sheffield	282	51	5.5
Doncaster	86	17	5.1
Hull Satellite - Grimsby	60	12	5.0
Hull Satellite - Scunthorpe	60	12	5.0
Sheffield Satellite - Chesterfield	60	12	5.0
Bradford	160	34	4.7
Sheffield Satellite - Barnsley	61	13	4.7
York	60	13	4.6
York Satellite - Harrogate	36	8	4.5
Leeds	94	22	4.3
Hull	152	36	4.2
Leeds Satellite - Beeston Medical Centre	40	10	4.0
Leeds Satellite - Calderdale	40	10	4.0
Leeds Satellite - Dewsbury	48	12	4.0
Leeds Satellite - Huddersfield Royal	56	14	4.0
Leeds Satellite - Pontefract	48	12	4.0
Leeds Satellite - Seacroft B Ward	40	10	4.0
Leeds Satellite - Seacroft R&S Ward	135	34	4.0
Sheffield Satellite - Rotherham	79	20	4.0
York Satellite - Easingwold	38	10	3.8
Bradford Satellite - Skipton	33	9	3.7
Doncaster Satellite - Dearne Valley	35	12	2.9
Hull Satellite - Scarborough	28	10	2.8
Sheffield Satellite - Heeley	54	20	2.7
Hull Satellite - Bridlington	26	12	2.2
Doncaster Satellite - Bassetlaw	38	20	1.9

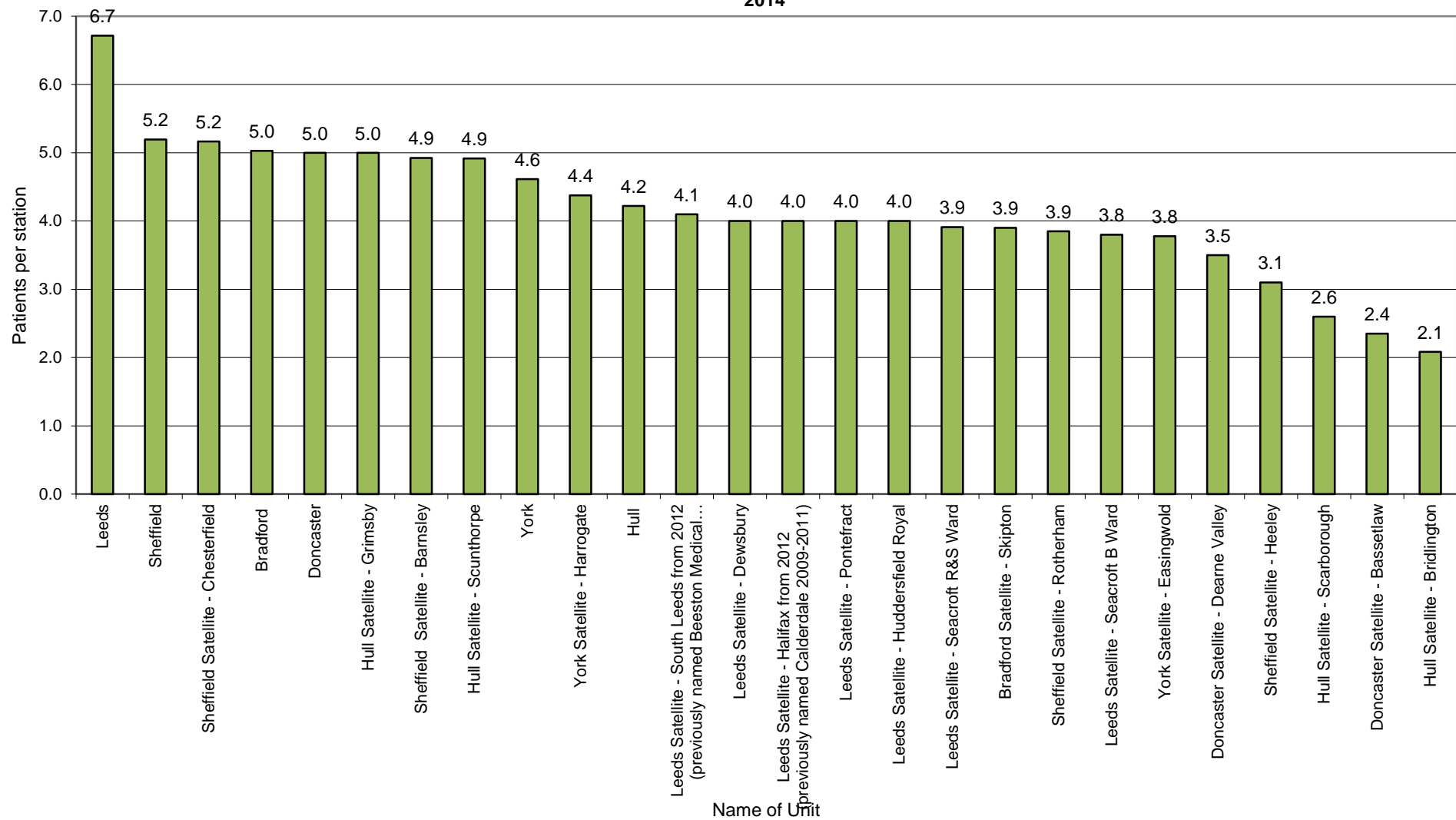
**Yorkshire and the Humber
Number of Dialysis Stations and Patients in Main Units and Satellite Units and
Number of Patients per Station Ratio Highest to Lowest
2013**



**Yorkshire and the Humber
Number of Dialysis Stations and Patients in Main Units and Satellite Units and
Number of Patients per Station Ratio Highest to Lowest
2014**

Unit	Number of patients	Number of stations	Patients per Station - 2014
Leeds	94	14	6.7
Sheffield	296	57	5.2
Sheffield Satellite - Chesterfield	62	12	5.2
Bradford	181	36	5.0
Doncaster	90	18	5.0
Hull Satellite - Grimsby	60	12	5.0
Sheffield Satellite - Barnsley	64	13	4.9
Hull Satellite - Scunthorpe	59	12	4.9
York	60	13	4.6
York Satellite - Harrogate	35	8	4.4
Hull	152	36	4.2
Leeds Satellite - South Leeds from 2012 (previously named Beeston Medical Centre)	41	10	4.1
Leeds Satellite - Dewsbury	48	12	4.0
Leeds Satellite - Halifax from 2012 (previously named Calderdale 2009-2011)	40	10	4.0
Leeds Satellite - Pontefract	48	12	4.0
Leeds Satellite - Huddersfield Royal	56	14	4.0
Leeds Satellite - Seacroft R&S Ward	133	34	3.9
Bradford Satellite - Skipton	39	10	3.9
Sheffield Satellite - Rotherham	77	20	3.9
Leeds Satellite - Seacroft B Ward	38	10	3.8
York Satellite - Easingwold	34	9	3.8
Doncaster Satellite - Dearne Valley	42	12	3.5
Sheffield Satellite - Heeley	62	20	3.1
Hull Satellite - Scarborough	26	10	2.6
Doncaster Satellite - Bassetlaw	47	20	2.4
Hull Satellite - Bridlington	25	12	2.1

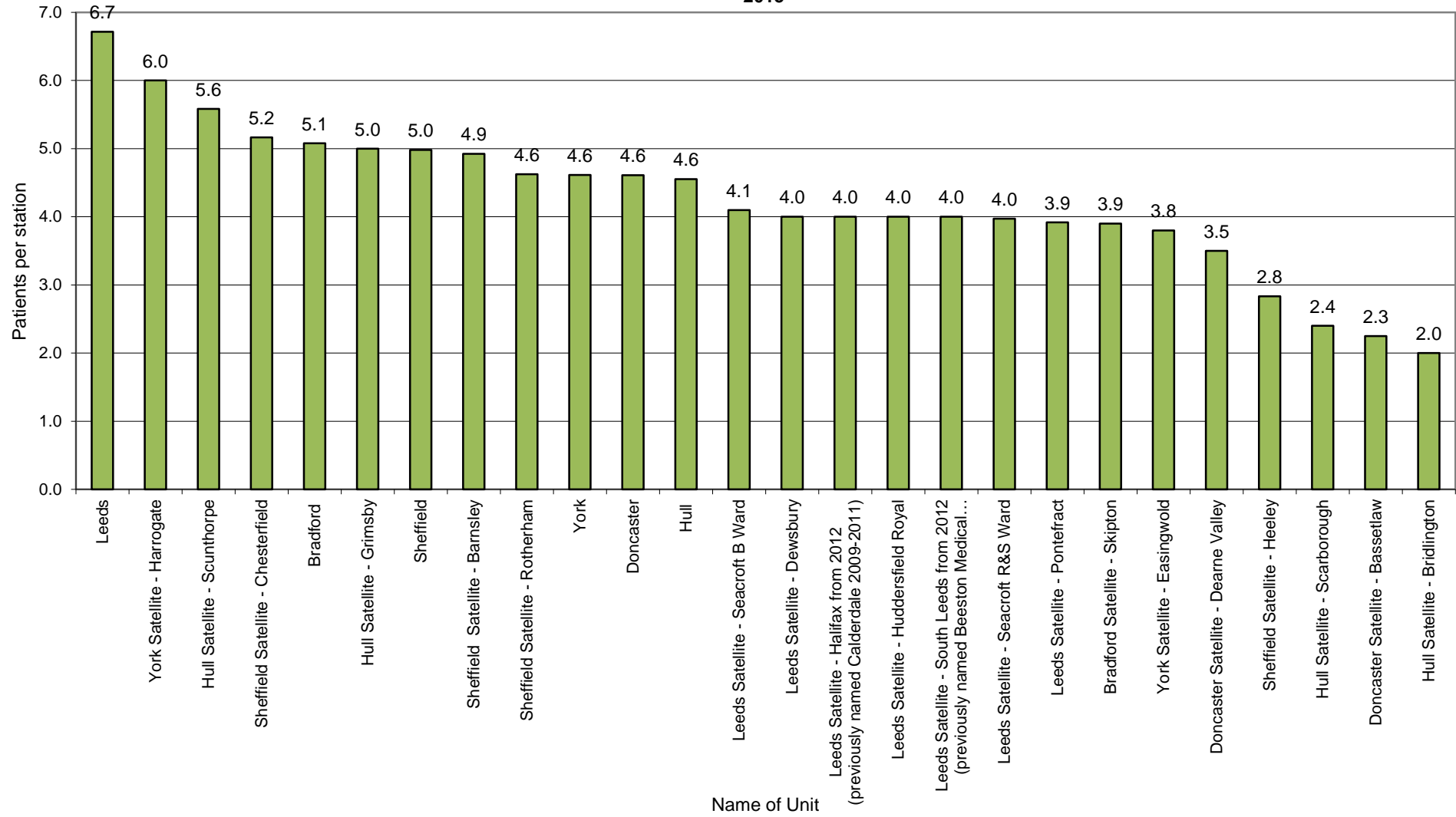
**Yorkshire and the Humber
Number of Dialysis Stations and Patients in Main Units and Satellite Units and
Number of Patients per Station Ratio Highest to Lowest
2014**



**Yorkshire and the Humber
Number of Dialysis Stations and Patients in Main Units and Satellite Units and
Number of Patients per Station Ratio Highest to Lowest
2015**

Unit	Number of patients	Number of stations	Patients per Station - 2015
Leeds	94	14	6.7
York Satellite - Harrogate	48	8	6.0
Hull Satellite - Scunthorpe	67	12	5.6
Sheffield Satellite - Chesterfield	62	12	5.2
Bradford	193	38	5.1
Hull Satellite - Grimsby	60	12	5.0
Sheffield	284	57	5.0
Sheffield Satellite - Barnsley	64	13	4.9
Sheffield Satellite - Rotherham	74	16	4.6
York	60	13	4.6
Doncaster	83	18	4.6
Hull	173	38	4.6
Leeds Satellite - Seacroft B Ward	41	10	4.1
Leeds Satellite - Dewsbury	48	12	4.0
Leeds Satellite - Halifax from 2012 (previously named Calderdale 2009-2011)	40	10	4.0
Leeds Satellite - Huddersfield Royal	56	14	4.0
Leeds Satellite - South Leeds from 2012 (previously named Beeston Medical Centre 2009-2011)	40	10	4.0
Leeds Satellite - Seacroft R&S Ward	135	34	4.0
Leeds Satellite - Pontefract	47	12	3.9
Bradford Satellite - Skipton	39	10	3.9
York Satellite - Easingwold	38	10	3.8
Doncaster Satellite - Dearne Valley	42	12	3.5
Sheffield Satellite - Heeley	68	24	2.8
Hull Satellite - Scarborough	24	10	2.4
Doncaster Satellite - Bassetlaw	45	20	2.3
Hull Satellite - Bridlington	24	12	2.0

**Yorkshire and the Humber
Number of Dialysis Stations and Patients in Main Units and Satellite Units and
Number of Patients per Station Ratio Highest to Lowest
2015**



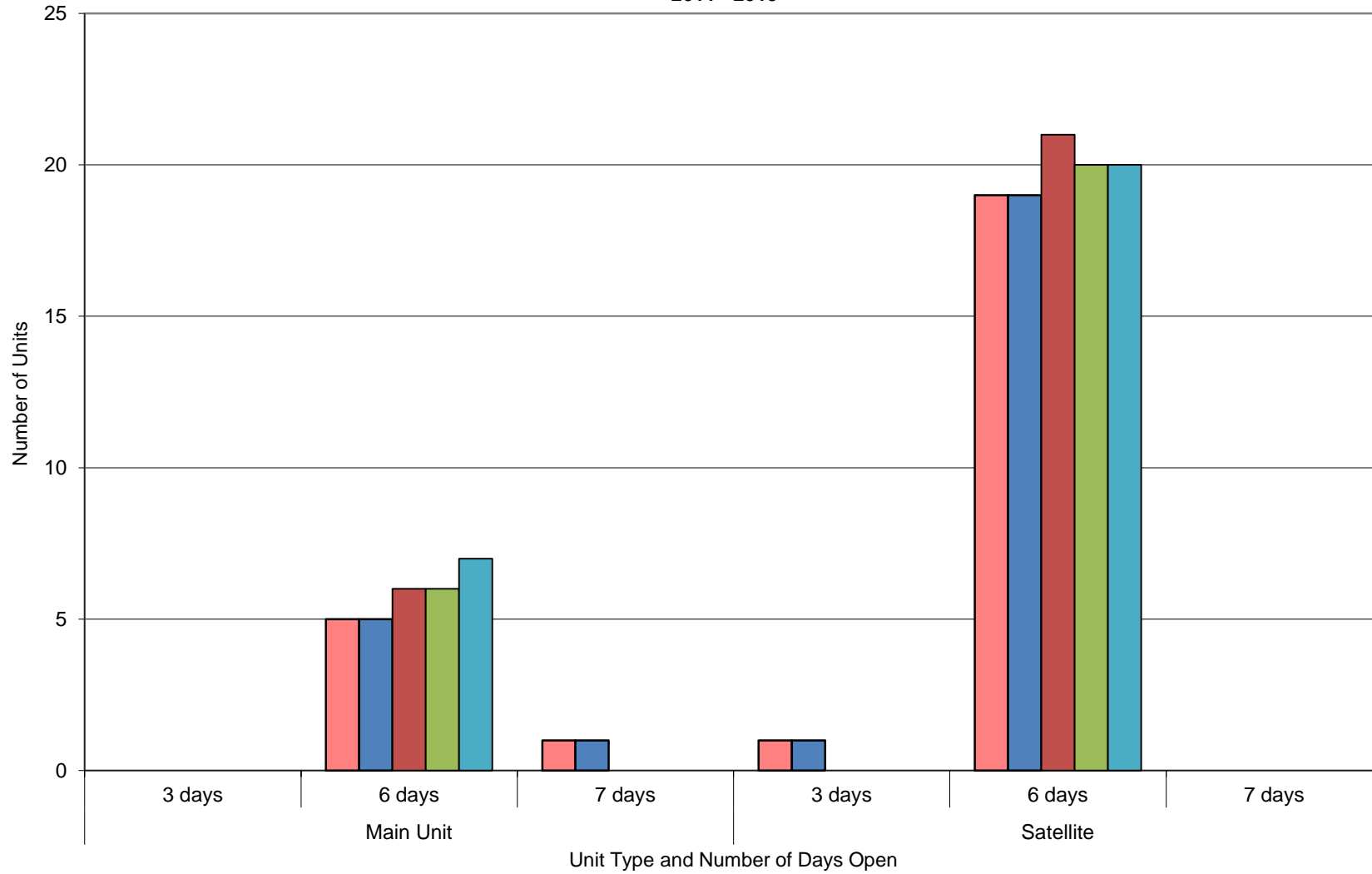
**Yorkshire and the Humber
Main Unit and Satellite Unit Chronic Dialysis
Number of Days Open per Week
2011 - 2015**

	Main Unit			Satellite			Total
	3 days	6 days	7 days	3 days	6 days	7 days	
2011	0	5	1	1	19	0	26
2012	0	5	1	1	19	0	26
2013	0	6	0	0	21	0	27
2014	0	6	0	0	20	0	26
2015	0	7	0	0	20	0	27

**Yorkshire and the Humber
Main Unit and Satellite Unit Chronic Dialysis
Number of Days Open per Week per Unit
2015 Only**

Unit	Main Unit			Satellite		
	3 days	6 days	7 days	3 days	6 days	7 days
Bradford	0	1	0	0	1	0
Doncaster	0	1	0	0	2	0
Hull	0	1	0	0	4	0
Leeds	0	1	0	0	7	0
Sheffield	0	1	0	0	4	0
York	0	1	0	0	2	0
Total	0	6	0	0	20	0

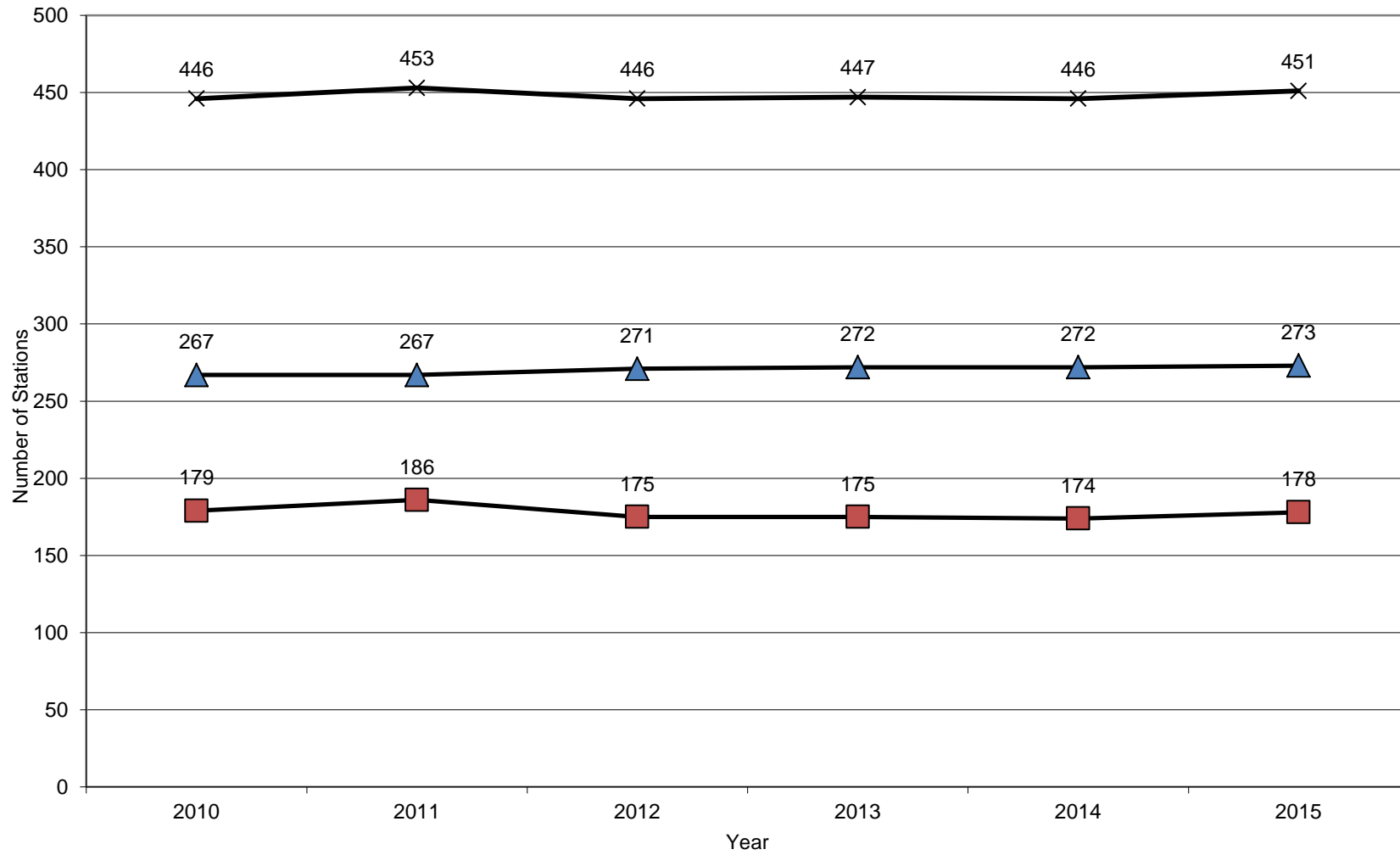
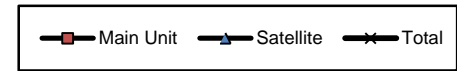
Yorkshire and the Humber
Main Unit and Satellite Unit Chronic Dialysis
Number of Days Open per Week
2011 - 2015



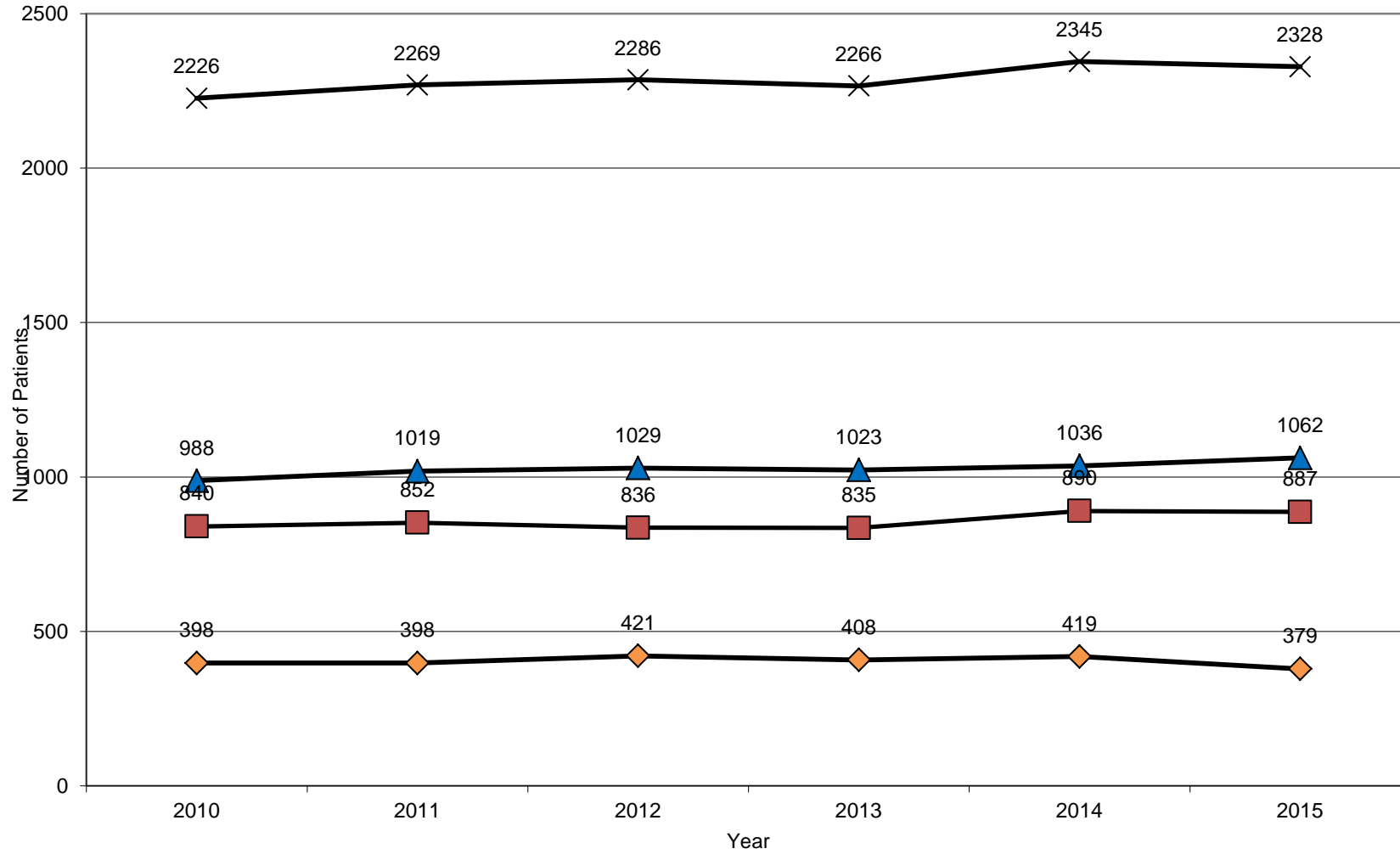
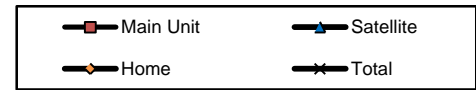
Yorkshire and the Humber Number of Dialysis Stations (chronic) reported per unit split by main and satellite per survey 2010 - 2015				
Renal Unit	Year	Main Unit	Satellite	Total
Bradford	2010	32	9	41
	2011	36	9	45
	2012	34	9	43
	2013	34	9	43
	2014	36	10	46
	2015	38	10	48
Doncaster	2010	17	32	49
	2011	17	32	49
	2012	17	32	49
	2013	17	32	49
	2014	18	32	50
	2015	18	32	50
Hull	2010	40	46	86
	2011	40	46	86
	2012	36	46	82
	2013	36	46	82
	2014	36	46	82
	2015	38	46	84
Leeds	2010	20	98	118
	2011	23	98	121
	2012	18	102	120
	2013	22	102	124
	2014	14	102	116
	2015	14	102	116
Sheffield	2010	57	65	122
	2011	57	65	122
	2012	57	65	122
	2013	53	65	118
	2014	57	65	122
	2015	57	65	122
York	2010	13	17	30
	2011	13	17	30
	2012	13	17	30
	2013	13	18	31
	2014	13	17	30
	2015	13	18	31
Yorkshire and the Humber	Year	Main Unit	Satellite	Total
	2010	179	267	446
	2011	186	267	453
	2012	175	271	446
	2013	175	272	447
	2014	174	272	446
	2015	178	273	451

Yorkshire and the Humber Number of Dialysis Patients reported per unit split by main, satellite and home per survey 2010 - 2015					
Renal Unit	Year	Main Unit	Satellite	Home	Total
Bradford	2010	156	35	36	227
	2011	167	34	31	232
	2012	164	33	32	229
	2013	160	33	33	226
	2014	181	39	28	248
	2015	193	39	28	260
Doncaster	2010	78	58	28	164
	2011	89	71	23	183
	2012	87	79	24	190
	2013	86	73	34	193
	2014	90	89	38	217
	2015	83	87	30	200
Hull	2010	150	166	77	393
	2011	145	170	97	412
	2012	152	180	105	437
	2013	152	174	92	418
	2014	152	170	96	418
	2015	173	175	90	438
Leeds	2010	100	380	109	589
	2011	107	388	106	601
	2012	84	398	98	580
	2013	94	407	95	596
	2014	111	404	108	623
	2015	94	407	82	583
Sheffield	2010	287	280	124	691
	2011	288	284	110	682
	2012	289	274	116	679
	2013	283	262	115	660
	2014	296	265	107	668
	2015	284	268	109	661
York	2010	69	69	24	162
	2011	56	72	31	159
	2012	60	65	46	171
	2013	60	74	39	173
	2014	60	69	42	171
	2015	60	86	40	186
Yorkshire and the Humber	Year	Main Unit	Satellite	Home	Total
	2010	840	988	398	2226
	2011	852	1019	398	2269
	2012	836	1029	421	2286
	2013	835	1023	408	2266
	2014	890	1036	419	2345
	2015	887	1062	379	2328

Yorkshire and the Humber
Number of Dialysis Stations (chronic) split by Total, Main and Satellite
2010 - 2015



Yorkshire and the Humber
Number of Dialysis Patients split by Main, Satellite and Home
2010 - 2015



Yorkshire and the Humber
Number of Home Therapies by Modality (Home Haemodialysis (HDD), Peritoneal Dialysis (PD) and Assisted PD) by Renal Unit per Survey Year
2010 - 2015

	Bradford						Doncaster						Hull						Leeds						Sheffield						York						Yorkshire and the Humber										
	2010	2011	2012	2013	2014	2015	2010	2011	2012	2013	2014	2015	2010	2011	2012	2013	2014	2015	2010	2011	2012	2013	2014	2015	2010	2011	2012	2013	2014	2015	2010	2011	2012	2013	2014	2015	2010	2011	2012	2013	2014	2015	2010	2011	2012	2013	2014
Assisted PD	3	0	3	5	3	7	1	3	4	6	8	3	3	5	12	10	8	8	10	15	13	15	19	11	7	7	9	9	11	11	2	0	0	1	2	1	26	30	41	46	51	41					
PD	33	31	28	28	20	14	27	20	20	28	23	19	65	84	83	73	76	73	84	78	72	61	69	46	70	61	64	58	50	53	20	24	35	27	30	27	299	298	302	275	268	232					
HHD	0	0	1	2	5	7	0	0	0	0	7	8	9	8	10	9	10	9	15	13	13	19	20	25	47	42	43	48	46	45	2	7	11	11	10	12	73	70	78	89	98	106					
Total	36	31	32	35	28	28	28	23	24	34	38	30	77	97	105	92	94	90	109	106	98	95	108	82	124	110	116	115	107	109	24	31	46	39	42	40	398	398	421	410	417	379					

Yorkshire and the Humber			
Year	Assis PD	HHD	Total
2010	26	299	398
2011	30	298	398
2012	41	302	421
2013	46	275	410
2014	51	268	417
2015	41	232	379

Yorkshire and the Humber
Number of Home Therapies by Modality (Home Haemodialysis (HDD), Peritoneal Dialysis (PD) and Assisted PD) 2010 - 2015

